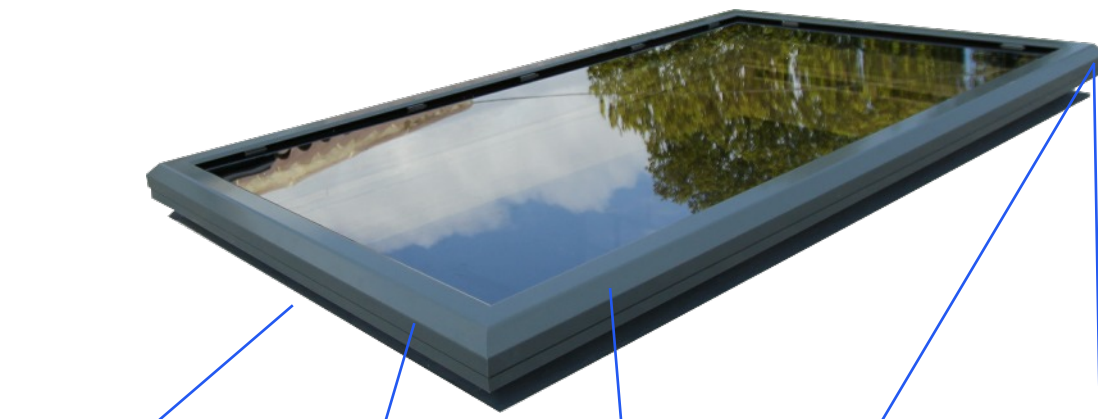


Part Identification



Allen key



Star Drive T4



4.8mm x 13 SS
Self Tapper Star
T4



50mm x G6
Screw



Eaves Beam



Outer Frame



Glass Clip



Ratchet Cleat



Block Cleat



Follow These Fitting Steps



Check opening is square, flat and has correct fall.



Position eaves beam on upstand with abed of sealant.



Join eaves beam at corners with cleats, sealing mitre joint.



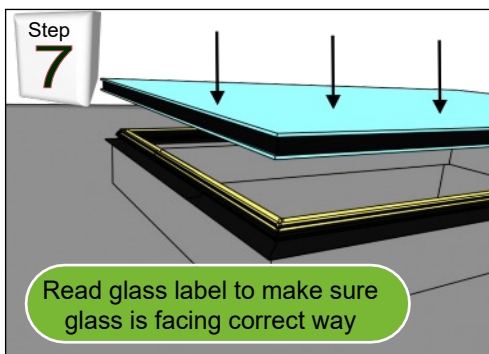
Tighten cleats with allen key provided.



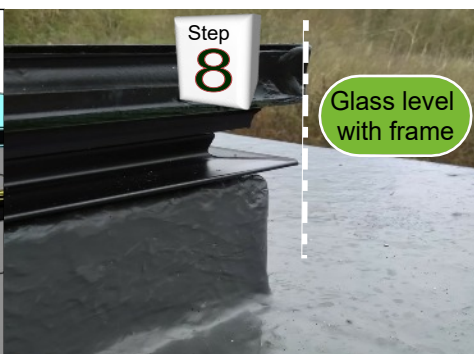
Fix eaves beam down to upstand making sure not open up mitres.



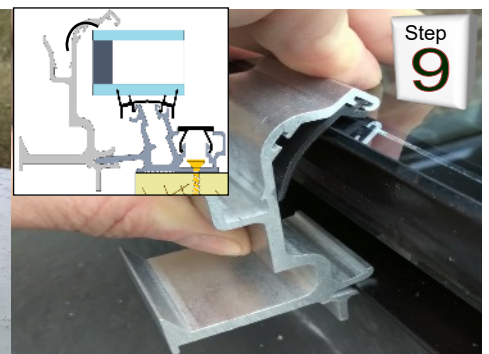
Frame MUST be level, do NOT bow eaves beam, pack if required.



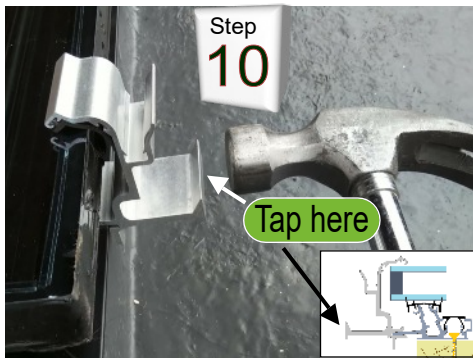
Lay glass on to eaves beam. Make sure glass is facing correct way.



Glass should be level all around with eaves beam frame.



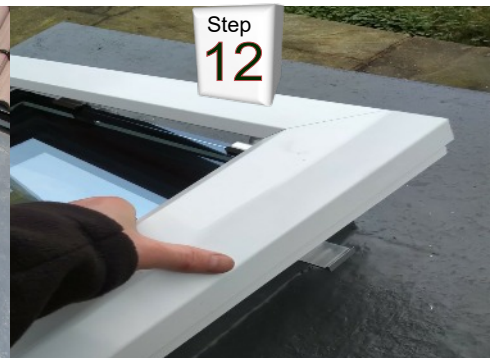
Push glass clips on to eaves beam hooking over glass.



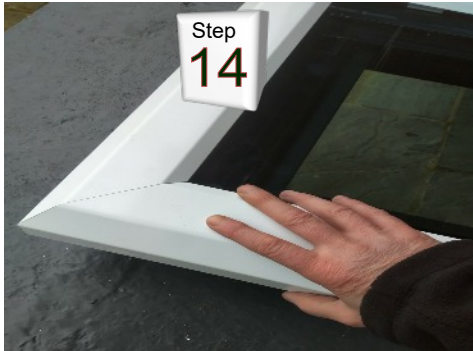
Tap glass lock on to eaves beam at point shown.



Space glass clips evenly around frame.



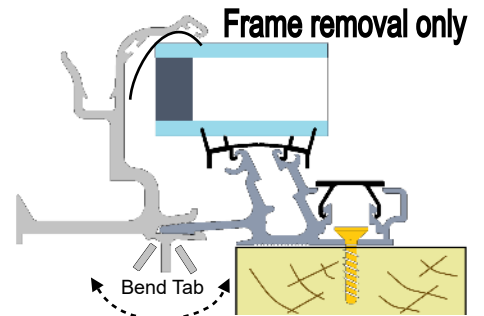
Offer outer frame on to glass clips.



Once positioned check fit before clipping down.



Beware, once frame is clipped down it can not be removed. If this needs to be done see next step, more clips will be required.



If you need to remove frame. Grip tabs on glass clip with strong pliers and bend tab back and fourth to break tab off. Do this on each glass clip then frame can be removed.

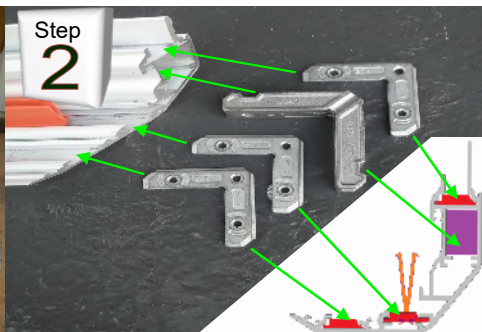
Flat Pack Guide

Flat Pack Outer Frame Assembly Only

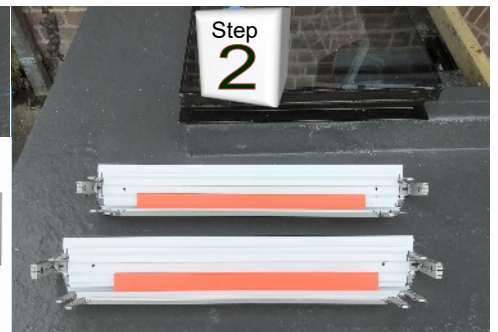
This is only if you have had the outer frame delivered as a flat pack and not pre-assembled.



Unpack outer frame and locate two shortest lengths.



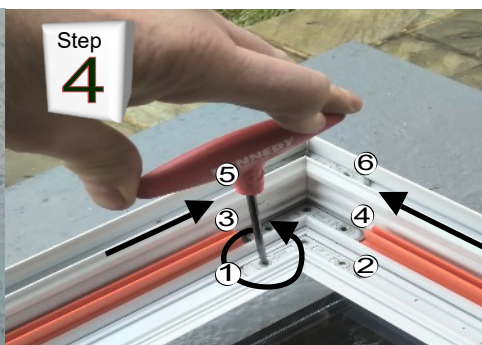
Insert 3x ratchet cleats and 1x block cleat in each end.



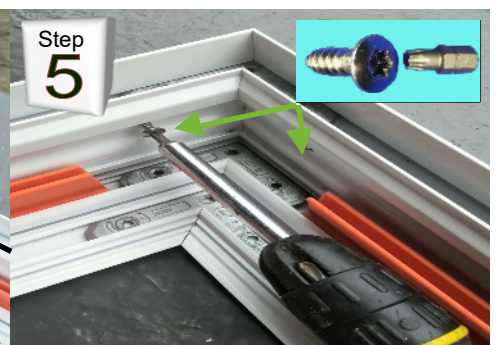
Each shortest length should have correct cleats in each end.



On a flat base (the glass panel is ideal for this) join the frames.



Tighten each of the ratchet cleats with the allen key.



Once the mitres are closed, secure in place with screw shown.