



# Product Guide

Issue 21/03

[www.carltonplastics.co.uk](http://www.carltonplastics.co.uk)

# The Independent PVCu Stockists



Our experienced staff are available  
7.30am to 4.30pm Monday to Friday

Trade Counter off Beddington Lane.  
(see the map on the inside back cover)

By phone on

**020 8665 1221**

Or by email

**sales@carltonplastics.co.uk**



Facebook.com/carltonplastics

Twitter.com/carltonbpl



020 8665 1221



sales@carltonplastics.co.uk

# Carlton

Building Plastics Limited

The Independent PVCu Stockist

PVCu Fascia & Soffit  
Guttering & Downpipes  
Cladding & Trims



Conservatory Kit Roofs  
Polycarbonate & Glass  
Glazing Bar Systems



PVCu Windows & Doors  
Bi-Fold & Patio Doors  
Composite Doors



Architrave & Trims  
Silicones & Fixings  
Decking & Fencing

**Carltonplastics.co.uk**

- PVCu Fascia & Soffit
- Guttering & Downpipes
- Cladding & Trims
- Conservatory Kit Roofs
- Polycarbonate & Glass
- Glazing Bar Systems

- PVCu Windows & Doors
- Bi-Fold & Patio Doors
- Composite Doors
- Architrave & Trims
- Silicones & Fixings
- Decking & Fencing



Proud sponsors  
of

**CROYGAS  
YOUTH FC**

# for all your building plastics

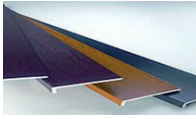
## The Range

**Over 3000 Products!**

### PVCu Colours



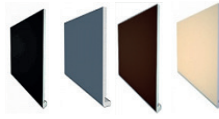
PVCu White



PVCu Standard Grain



PVCu Premium Grain

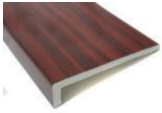


PVCu Solid Colour

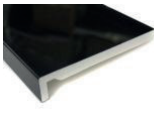


PVCu Colour Bonded

### PVCu Roofline



Capping Fascias



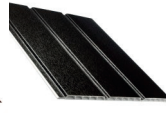
Replacement Fascias



Standard Soffit



Vented Soffit



Hollow Soffit



Bargeboards



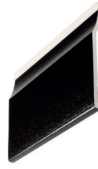
GRP Finial



GRP Dentil



Exterior Cornice



Cladding



Over Fascia Vents



Polytop Fixings

### PVCu Gutting



Half Round



Square



Deepflow



Ogee



Super Deep



Cast Iron Effect

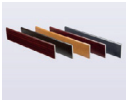


020 8665 1221



[sales@carltonplastics.co.uk](mailto:sales@carltonplastics.co.uk)

## PVCu Windowline



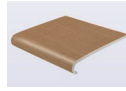
Architraves



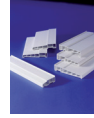
Ogee Architrave



Window Trims



Windowboard



External cills



Angles



Silicones



Foam & Cleaners



Glue & Fillers



Fixings



Packers



Tools

## PVCu Windows, Doors & Conservatories



PVCu Windows



Vertical Sliders



Tilt & Turn



French & Patio Doors



PVCu Doors



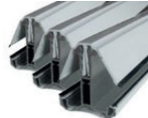
Composite



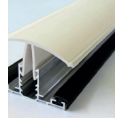
Aluminium  
BI-Folds



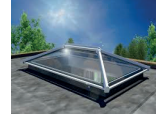
Conservatory Roofs



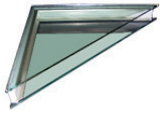
Self-supporting  
Glazing Bars



Timber  
Supported Bars



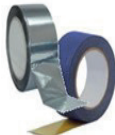
Glass Lanterns



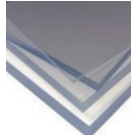
Double  
Glazed Units



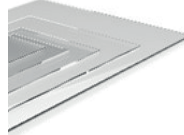
Polycarbonate



Accessories



Solid Polycarbonate



Acrylic



Laminated Windowboards

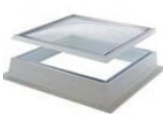


Vents

## Other Products...and Many More.



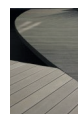
Corrugated Sheet



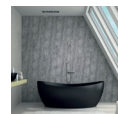
Roof Domes



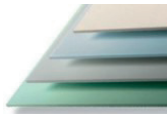
GRP Door Canopies



Decking



Internal Cladding



Hygiene

# INDEX

	ROOFLINE
14	9mm Capping Fascia
16	16mm Replacement Fascia
18	Square Edged Accessories
20	9mm Ogee Fascia
21	16/18mm Ogee
22	9mm Square Longer Leg
23	16mm Flush
24	16mm Bullnose
25	22mm Bullnose
26	Fascia Board Accessories
28	Dry Verge
30	Decorative Cornice & Gallows
32	Soffit Board
34	9mm Flat Board
36	9mm Vented Soffit
37	Hollow Soffit
	WINDOWLINE
39	9mm Hockey Window Board
40	Laminated Window Board
41	Cover Cills
42	External cills
43	Rigid & Flexi angles
44	Architrave
45	Smooth Black Trims
45	Smooth 7016 Trims
46	Window finishing Trims

48	Ogee Architrave
49	Skirting & Architrave
50	RAL Colour Bonding
51	Decorative Moulding
	ANCILLARIES
52	Silicones & Fillers
53	Cleaners
54	Fixings
55	Tools
	CLADDING
58	Shiplap & V Groove
59	Cladding Trims
60	Textured Cladding
62	Textured Cladding trims
	GUTTERING
66	Half-round
67	Square
68	Ogee
69	Deepflow
72	Cast –Iron Effect
74	SuperDeep 170
75	Stormflo 200
76	Soil & Underground
78	Gutter - Specification
80	Gutter - Installation
82	Gutter - Checklist



020 8665 1221



[sales@carltonplastics.co.uk](mailto:sales@carltonplastics.co.uk)

	<b>WINDOWS AND DOORS</b>
86	Window Styles
88	Hinge Options
89	Handle Options
90	Victorian Sliders
92	Door Styles
94	PVCu Door Panels
96	Composite Doors
98	Bi-Fold Doors
	<b>POLYCARBONATE SHEET AND GLAZING BARS</b>
104	Clear
106	Opal
108	Bronze
110	Silver Athermic
114	Self Supporting
115	Timber Supported
116	Self Supporting Installation
118	Ultrasky Lanterns
120	Maxi Roof lights
122	Wendland Kit Roof Systems
123	Classicroof

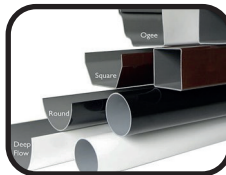
124	LivinRoof
125	Ultraroorf
126	Roof Domes
127	Roof Vents
128	Conservatory Styles
130	Canopy Systems
132	Maxi-Lite Canopy System
	<b>MISCELLANEOUS</b>
134	Door Canopies
136	Clever Click Flooring
138	PVC Internal Cladding
140	3D Effect Panels
141	Tile Effect Panels
142	Bathroom Panels
143	4mm Solid Panels
144	Gloss Foam Sheets
	<b>LANDSCAPE SOLUTIONS</b>
148	Composite Decking
154	Balustrades
156	Composite Fencing
	<b>INSTALLATION GUIDES</b>
162	Installation Guides

# Roofline Overview

## ROOFLINE



FASCIA BOARDS



GUTTERING



SOFFIT



020 8665 1221



[sales@carltonplastics.co.uk](mailto:sales@carltonplastics.co.uk)

We have all aspects of your **Roofline** needs covered.

**Fascia boards:-** both “capping boards” and “full replacement” are available in a range of styles, colours, grains and sizes.

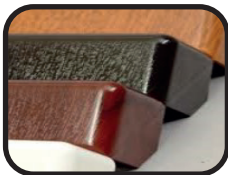
**Soffit boards:-** also known as flat boards - are available in a range of sizes both standard and vented. These can be easily matched to the fascia in terms of colour or grain effect or offered in a contrasting finish.

**Corners, joints and fixings:-** available to match your installation together with a range of accessories.

**Guttering:-** available in half-round, square, ogee and deepflow. We also stock a Super Deep gutter for larger installations. A range of colours are available together with the popular Cast Iron Effect.

**Decorative finishes:-** including dentils, cornice and gallows brackets are available.

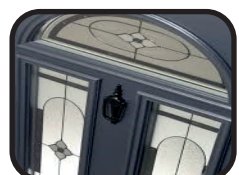
We can even supply the Roof !! See page 122 for details on the **Wendland**, **UltraRoof**, **LivinRoof** and **Classicroof** systems.



CORNERS/JOINTS



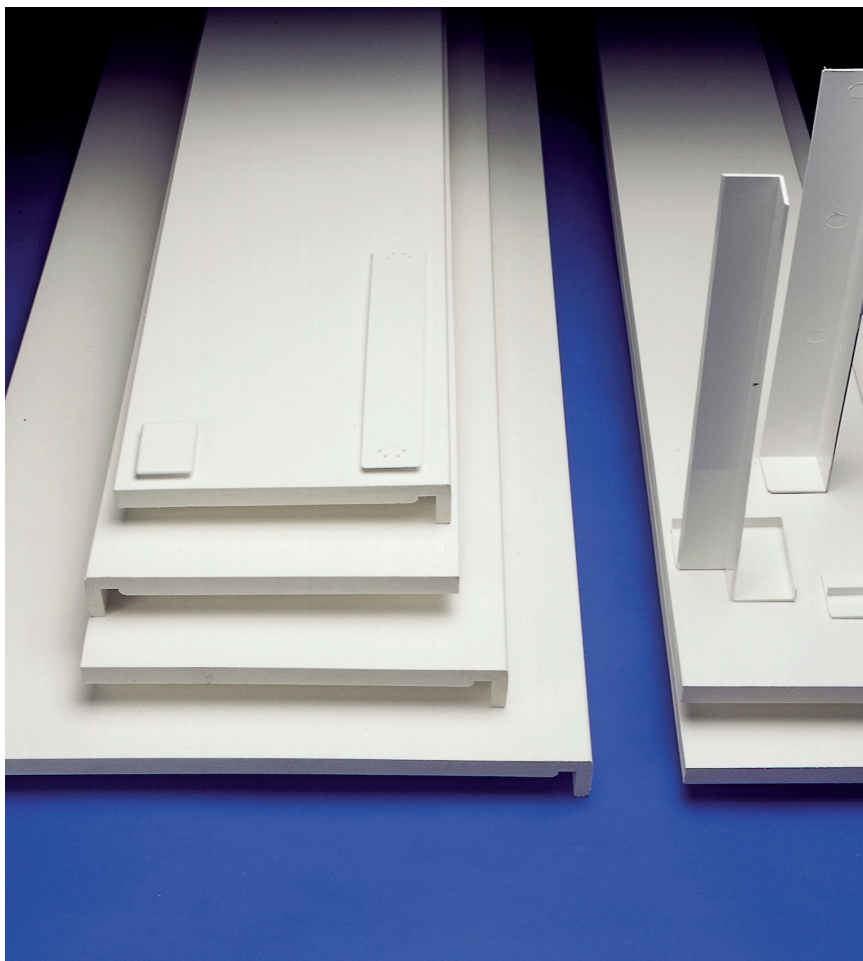
DECORATIVE



COMPOSITE DOORS

# Fascia Boards Introduction

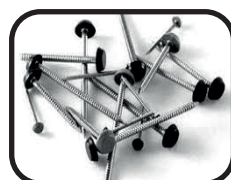
## ROOFLINE



OVER FASCIA VENT



CAST IRON EFFECT



PLASTIC NAILS



020 8665 1221



[sales@carltonplastics.co.uk](mailto:sales@carltonplastics.co.uk)

The fascia board is attached at the point where the roof meets the walls. It supports the bottom row of roof tiles and all the guttering, so it needs to be robust, low-maintenance and weather-resistant. PVCu boards not only meet these requirements but are also available in a range of styles and colours.

16mm boards are ideal for new builds or for full replacement of existing boards. They are attached directly to the rafter feet and are strong enough to support your guttering requirements.

9mm “capping” boards are designed to be attached to existing sound timber fascia boards or to new timber backboards to provide an easy to install, cost effective, long lasting and low maintenance solution.

Available in both standard or ogee style and in a range of colours and grain effects.

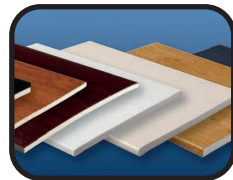
All boards are 5m lengths with a range of widths dependant upon style and colour.



TUDOR BOARDS



WINDOWS



SOFFIT BOARDS

## HOW TO DECIDE WHICH BOARD IS RIGHT FOR YOUR INSTALLATION.

### '3 Easy Steps'

1

**1. Full replacement (16mm) or  
Capping (9mm)?**



OR



2

**2. Which Colour?**

**White or one of the range of colour or  
grain effects.**

**NEED ADVICE**

CALL OUR EXPERIENCED TEAM

ON 020 8665 1221



020 8665 1221



[sales@carltonplastics.co.uk](mailto:sales@carltonplastics.co.uk)

3

## 3.Choose a Style.

**Square edge, ogee, flush or  
bullnose.**



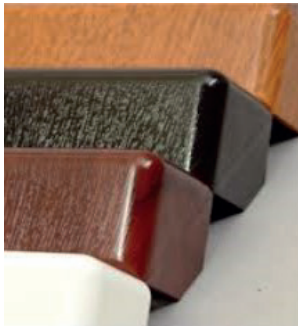
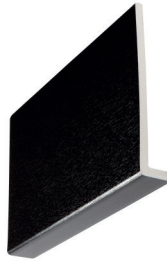
### **NEED ADVICE**

**EMAIL OUR EXPERIENCED TEAM**

**[sales@carltonplastics.co.uk](mailto:sales@carltonplastics.co.uk)**

# 9mm Square Edge Capping Fascia

## ROOFLINE



FINIAL



CLADDING



BARGEBOARDS



020 8665 1221



[sales@carltonplastics.co.uk](mailto:sales@carltonplastics.co.uk)

White	Standard Grains					Premium Grains					Solid Colours Smooth					Premium Colours Smooth				
Width	White	Blackgrain	Rosewood	Light Oak	Mahogany	Antracite Grey	White Foil	Cream Foil	Irish Oak	Black	Light Grey	Hazy Grey	Gale Grey	Sand	Light Grey 7035	Leather Brown	Storm Grey	Dark Grey	Pale Gold	Sable
100mm	●																			
125mm	●																			
150mm	●	●	●	●	●	●														
175mm	●	●	●	●	●	●				●	●	●	●	●	●	●	●	●	●	●
200mm	●	●	●	●	●	●				●	●	●	●	●	●	●	●	●	●	●
225mm	●	●	●	●	●	●	●	●	●	●	●	●	●	●	●	●	●	●	●	●
250mm	●	●	●	●	●	●														
300mm	●	●	●	●	●	●														
390mm	●																			
405mm	●	●	●	●	●	●				●	●	●	●			●	●	●	●	●
600mm	●										●					●	●	●	●	●
Box End 405mm x 1250mm	●	●				●														

Any size board can be colour matched to any RAL number with our colour bonding service.

All lengths are 5000mm.

New grain effect products are becoming available all the time. Please check with us.

Some larger boards may have two return legs.



PLASTIC PINS



SILICONE



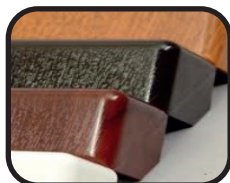
FRAME CLEANER

# 16mm Square Edge Fascia

## ROOFLINE



See page162 for  
Installation guide  
Or visit [Carltonplastics.co.uk](http://Carltonplastics.co.uk)  
for a full installation video.



FASCIA CORNERS



FRAME CLEANER



FASCIA JOINTS



020 8665 1221



[sales@carltonplastics.co.uk](mailto:sales@carltonplastics.co.uk)

White		Standard Grains			Premium Grains			Solid Colours Smooth				Premium Colours Smooth							
Width	White	Blackgrain	Rosewood	Light Oak	Mahogany	Anthracite Grey	White Foil	Cream Foil	Irish Oak	Black	Light Grey	Hazy Grey	Anthracite Grey	Cream	Leather Brown	Storm Grey	Dark Grey	Pale Gold	Sable
	150mm	●	●	●	●	●				●	●	●	●						
	175mm	●	●	●	●	●				●	●	●	●		●	●	●	●	●
	200mm	●	●	●	●	●		●	●	●	●	●	●		●	●	●	●	●
	225mm	●	●	●	●	●				●	●	●	●		●	●	●	●	●
	250mm	●	●	●	●	●				●	●	●	●						
	300mm	●																	
	355mm	●								●	●	●	●						
	405mm	●	●	●	●	●		●	●	●	●	●	●		●	●	●	●	●
	455mm	●																	
Box End 405mm x 1250mm																			

Any size board can be colour matched to any RAL number with our colour bonding service.

All lengths are 5000mm.

New grain effect products are becoming available all the time. Please check with us.

Some larger boards may have two return legs.



BIRDCOMB



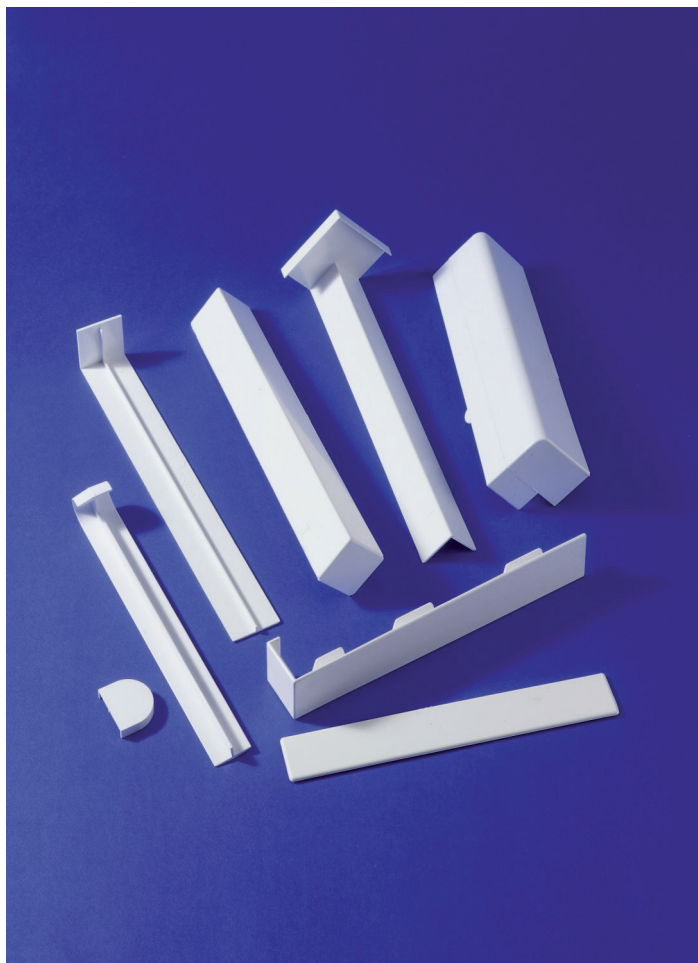
ADHESIVES



VENT/PROTECTOR

# Square Edged Fascia Board

ROOFLINE



TRIM SNIPS



CLEANING WIPES



PAPER TOWELS



020 8665 1221



[sales@carltonplastics.co.uk](mailto:sales@carltonplastics.co.uk)

Accessory	White	Standard Grains				Premium Grains		
	White	Blackgrain	Rosewood	Light Oak	Mahogany	Anthracite	Cream Foil	Irish Oak
300mm External Corner	•	•	•	•	•	•	•	•
300mm Joint	•	•	•	•	•	•	•	•
300mm Internal Corner	•	•	•	•	•	•	•	•
500/600 Double External Corner	•	•	•	•	•	•	•	•
500/600 Double Joint	•							
500mm Internal Corner	•							
410mm Internal 135° Corner	•	•	•	•	•			
410mm External 135° Corner	•	•	•	•	•			
250mm End Cap	•	•	•	•	•	•	•	•
50mm End Cap	•							



GLUE & ACTIVATOR



FIX ALL



SILICONE

# 9mm Ogee Capping Fascia

## ROOFLINE

White		Standard Grains				Premium Grains					
Width	White	Blackgrain	Rosewood	Light Oak	Mahogany	White Foil	Cream Foil	Anthracite Grey	Chartwell Green	Irish Oak	Smooth Black
	150mm	●									●
	175mm	●	●	●	●		●	●	●	●	●
	200mm	●	●	●	●		●				●
	225mm	●	●	●	●		●	●	●	●	●
	250mm	●									●
	405mm	●	●	●	●		●	●	●	●	●

Any size board can be colour matched to any RAL number with our colour bonding service.

All lengths are 5000mm.

New grain effect products are becoming available all the time. Please check with us.

Some larger boards may have two return legs.



Various corners and joints available to match.



FINIALS



WE DELIVER



EXTERNAL CORNICE



020 8665 1221



[sales@carltonplastics.co.uk](mailto:sales@carltonplastics.co.uk)

# 16mm/18mm Ogee Fascia



White		Standard				Premium Grains					
Width	White	Blackgrain	Rosewood	Light Oak	Mahogany	White Foil	Cream Foil	Chartwell Green	Anthracite Grey	Irish Oak	
		150mm	●								
		175mm	●	●		●					
		200mm	●								
		225mm	●	●	●						
		250mm	●								
		355mm	●								
		405mm	●	●	●	●		●	●	●	●

Any size board can be colour matched to any RAL number with our colour bonding service.

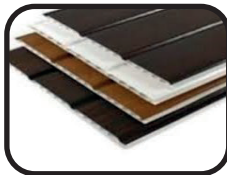
All lengths are 5000mm.

New grain effect products are becoming available all the time. Please check with us.

Some larger boards may have two return legs.



OGEE GUTTER



HOLLOW SOFFIT



CAST IRON EFFECT

# 9mm - 44mm Long Leg

## ROOFLINE

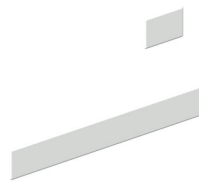
White		Standard Grains				Premium Grains			
Width	White	Blackgrain	Rosewood	Light Oak	Mahogany	Anthracite Grey	White Foil	Cream Foil	Irish Oak
150mm	●								
175mm	●								
200mm	●								
225mm	●								
250mm	●								
355mm*	●								
405mm*	●								

Any size board can be colour matched to any RAL number with our colour bonding service.

All lengths are 5000mm.

New grain effect products are becoming available all the time. Please check with us.

Some larger boards may have two return legs.



DOOR CANOPIES



BI-FOLD DOORS



COMPOSITE DOORS



020 8665 1221



[sales@carltonplastics.co.uk](mailto:sales@carltonplastics.co.uk)

# 16mm Flush Fascia

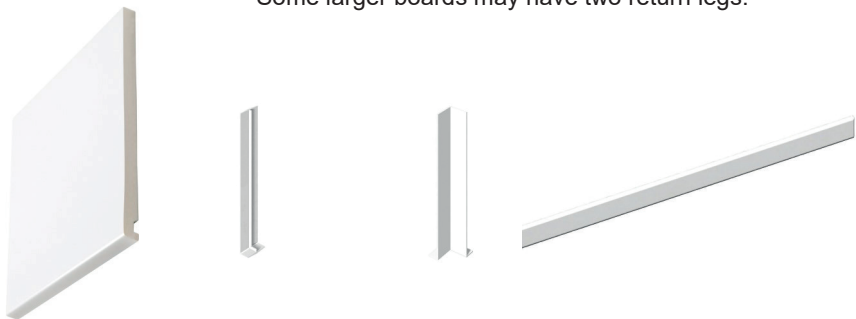
Width	White	Standard Grains				Premium Grains		
		Blackgrain	Rosewood	Light Oak	Mahogany	Anthracite Grey	White Foil	Cream Foil
150mm	●	●	●					
175mm	●							
200mm	●							
225mm	●							
250mm	●		●					
405mm*	●							

Any size board can be colour matched to any RAL number with our colour bonding service.

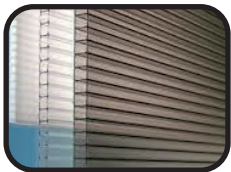
All lengths are 5000mm.

New grain effect products are becoming available all the time. Please check with us.

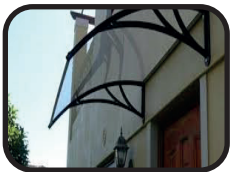
Some larger boards may have two return legs.



GRP DOOR CANOPIES



POLYCARBONATE



DOOR CANOPIES

# 16/18mm Bullnose Fascia

## ROOFLINE

Width	White	Standard Grains				Premium Grains	
		Blackgrain	Rosewood	Light Oak	Mahogany	White Foil	Cream Foil
150mm	●	●	●	●	●		
175mm	●	●	●	●	●		
200mm	●	●	●	●	●		
225mm	●	●	●	●	●		
250mm	●	●	●	●	●		
355mm	●						
405mm	●	●	●	●	●		
455mm	●						



Any size board can be colour matched to any RAL number with our colour bonding service.

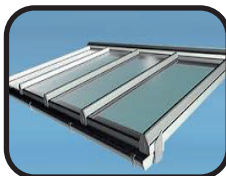
All lengths are 5000mm.

New grain effect products are becoming available all the time. Please check with us.

Some larger boards may have two return legs.



CONSERVATORY ROOF



GLAZING BARS



ROOF DOMES



020 8665 1221



[sales@carltonplastics.co.uk](mailto:sales@carltonplastics.co.uk)

# 22mm Bullnose Fascia

Width	White	Standard Grains				Premium Grains			
	White	Blackgrain	Rosewood	Light Oak	Mahogany	Anthracite Grey	White Foil	Cream Foil	Irish Oak
150mm	●	●	●	●	●				
175mm	●	●	●	●	●				
200mm	●	●	●	●	●				
225mm	●	●	●	●	●				
250mm	●	●	●	●	●				
300mm	●	●	●	●	●				
355mm	●								
405mm	●	●	●	●	●				
Box End 405mm x 1250mm	●	●	●	●	●				

Any size board can be colour matched to any RAL number with our colour bonding service.

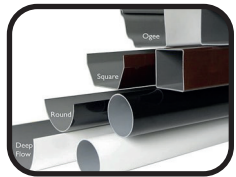
All lengths are 5000mm.

New grain effect products are becoming available all the time. Please check with us.

Some larger boards may have two return legs.



PLASTIC PINS



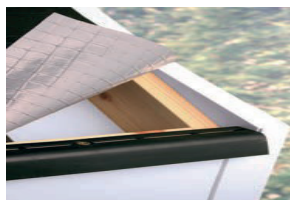
GUTTERING



OVER FASCIA PROTECTOR

# Fascia Board Accessories

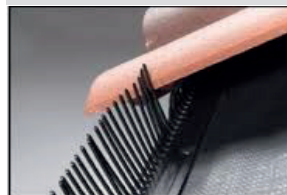
## ROOFLINE



Over fascia ventilation 1.0m. Available in two sizes of airflow 10,000m<sup>2</sup> or 25,000m<sup>2</sup>



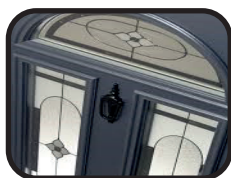
Eaves Protector 1.5m



Birdcomb 1.0m



3-in-1 over fascia vent, protector and birdcomb 1.5m



COMPOSITE DOORS



DENTILS



CORNICE



020 8665 1221



[sales@carltonplastics.co.uk](mailto:sales@carltonplastics.co.uk)



Bargeboard - Convex



Bargeboard - Concave



Tudor Board - Black



150mm x 20mm



Finials 3D



2D



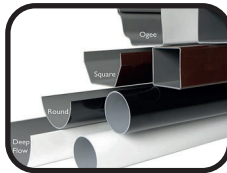
Box Ends



Dry Verge



BOX END



GUTTERING



SOFFIT

# Dry Verge

Verge Master dry verge system has been designed to provide a quick and easy, great looking, solution for finishing the verge of a roof.

Installation is easy via the "flex and fit" method and no special tools are needed.

Verge Master is suitable for new builds, although it can also be fitted retrospectively in the case of refurbishment projects.

The product comes with a 10 year manufacturer's guarantee.



## Verge Master



DVLH and DVRH



DVLHS and DVRHS

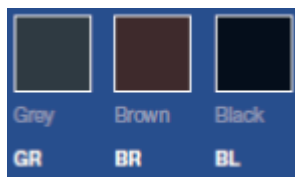
## Verge Top Ridge Caps



DVRCR



DVRCA



## Dry Verge Fixings



DVBEF

PREMIUM DRY VERGE SYSTEM  
**VERGE**  
MASTER



020 8665 1221



[sales@carltonplastics.co.uk](mailto:sales@carltonplastics.co.uk)

# Dry Verge

Verge Wizard provides a universal dry verge system which can be used on either the left hand or right hand verge. Suitable for refurbishment projects, although this system can be used in for new builds.

The universal starter can also be used for both right and left handed verges.

Dry verge offers a sleek and stylish finish which is practically maintenance free.

Quick and easy to fit using the “flex and clip” installation method.

Manufacturer's 10 year guarantee.



UNIVERSAL DRY VERGE SYSTEM

# VERGE

WIZARD

# External Cornice

ROOFLINE

## Cornices



## Rafter Foot



For full design profiles and dimensions on all cornices, gallows brackets and dentils visit our website.



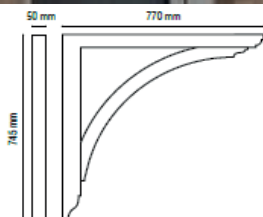
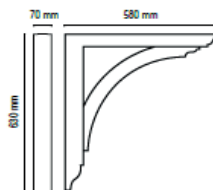
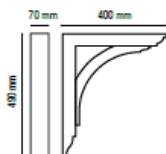
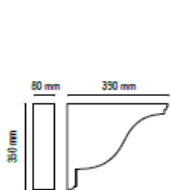
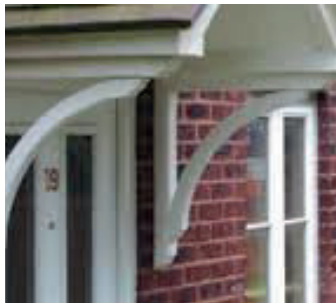
020 8665 1221



[sales@carltonplastics.co.uk](mailto:sales@carltonplastics.co.uk)

# Gallows Brackets & Dentils

## Gallows Brackets



## Dentils



# Soffit Boards Introduction

## ROOFLINE



**SOFFIT BOARDS** are the horizontal boards which sit between the wall and the fascia boards to provide a weatherproof finish to the roofline.

Available in three distinct styles, standard flat boards, pre-vented boards or lightweight tongue and groove effect hollow boards.

The boards are 5m in length and are available in a range of colours and grained effects to compliment our range of fascia boards.

Like the fascia board, soffit boards are available in a variety of widths and soffit joining strips can be used when the soffit depth requires the use of multiple boards.

It is important to allow ventilation to the roof space to avoid the build up of moisture and the damage that it can cause. Ventilation can be provided through the soffit board either by using pre-vented boards or installing soffit vents. Alternatively ventilation can be provided via over fascia vents.

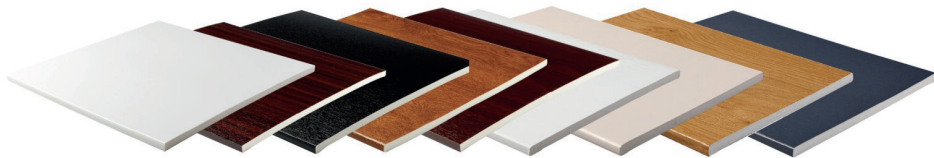


020 8665 1221

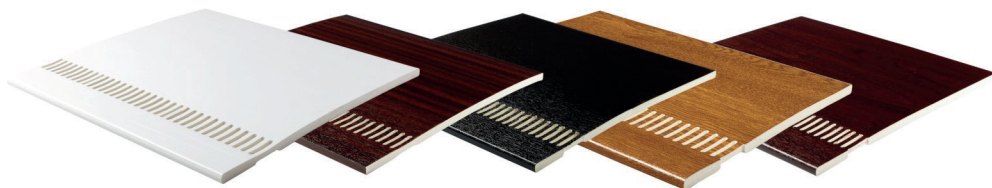


[sales@carltonplastics.co.uk](mailto:sales@carltonplastics.co.uk)

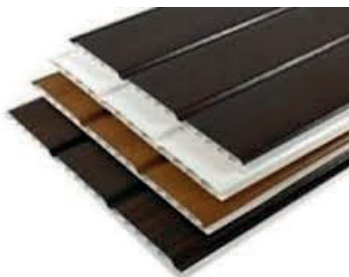
## Standard Flat board



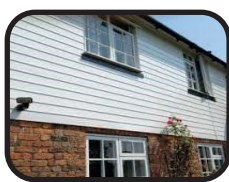
## Pre-Vented



## Hollow



WINDOWS



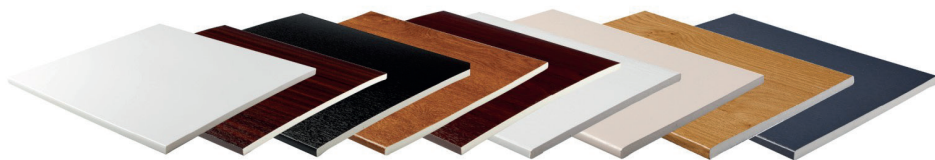
CLADDING



BARGEBOARDS

# 9mm Soffit / General Purpose Board

## ROOFLINE



WINDOWS



CLADDING



BARGEBOARDS



020 8665 1221



[sales@carltonplastics.co.uk](mailto:sales@carltonplastics.co.uk)

White		Standard Grains				Premier Grains			Solid Colours Smooth				Premium Colours Smooth					
Width	White	Blackgrain	Rosewood	Light Oak	Mahogany	Anthracite Grey	White Foil	Cream Foil	Irish Oak	Black	Light Grey	Hazy Grey	Anthracite Grey	Leather Brown	Storm Grey	Dark Grey	Pale Gold	Sable
100m	●	●	●	●	●													
125m	●																	
150m	●	●	●	●	●				●	●	●	●	●	●	●	●	●	●
175m	●	●	●	●	●													
200m	●	●	●	●	●	●		●	●	●	●	●	●	●	●	●	●	●
225m	●	●	●	●	●		●	●	●									
250m	●	●	●	●	●	●							●					
300m	●	●	●	●	●	●	●	●	●	●	●	●	●					
330m	●																	
400m	●	●	●	●	●	●	●	●	●	●	●	●	●	●	●	●	●	●
450m	●		●	●	●	●		●										
500m	●		●	●	●	●												
600m	●		●	●	●	●		●						●	●	●	●	●

Any size board can be colour matched to any RAL number with our colour bonding service.

All lengths are 5000mm.

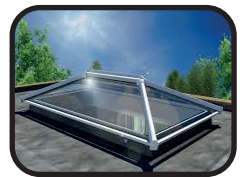
New grain effect products are coming available all the time. Please check with us.



FINIALS



WE DELIVER



ULTRASKY

# 9mm Vented Soffit

## ROOFLINE

### 10mm<sup>2</sup> Airflow

Width	White	Blackgrain	Rosewood	Light Oak	Mahogany	Anthracite Grey
150mm	●	●	●	●	●	
175mm	●					
200mm	●	●				●
225mm	●	●	●	●	●	●
250mm	●					
300mm	●	●	●	●	●	●
350mm						
400mm	●	●	●	●	●	●
450mm	●					
600mm	●					

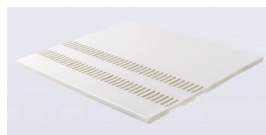
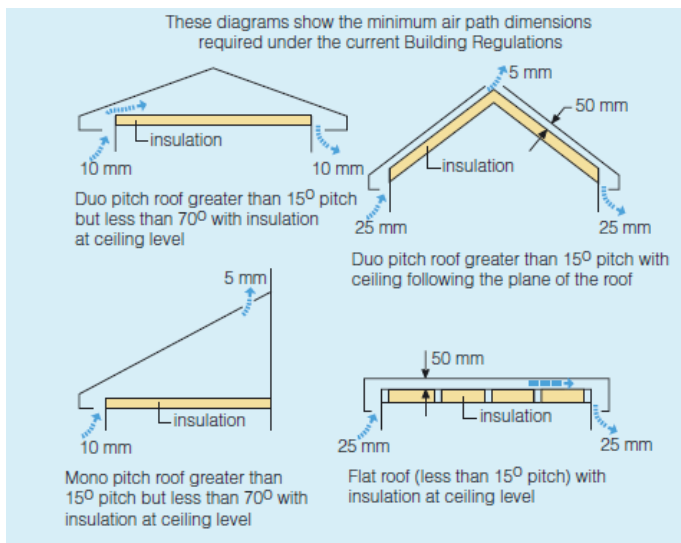
### 25mm<sup>2</sup> Airflow

Width	White	Anthracite Grey
150mm		
175mm		
200mm		
225mm	●	
250mm	●	
300mm	●	●
350mm	●	
400mm		
450mm	●	
600mm	●	

Any size board can be colour matched to any RAL number with our colour bonding service.

All lengths are 5000mm.

New grain effect products are becoming available all the time. Please check with us.



020 8665 1221



[sales@carltonplastics.co.uk](mailto:sales@carltonplastics.co.uk)



- Tongue-and-Groove effect
- Easy to install
- Cost effective
- Ideal for larger soffit areas
- Edge trims and joints available to compliment colours



Width	White	Blackgrain	Rosewood	Light Oak	Mahogany	Anthracite	Irish Oak	Cream	White	Black	Brown
300mm	●	●	●	●	●	●	●	●	●	●	●

Anthracite Grey RAL 7016  
Available in both smooth  
and woodgrained effect.

Any size board can be colour matched to any RAL number with our colour bonding service..

All lengths are 5000mm.

New grain effect products are becoming available all the time. Please check with us.

# Window Boards

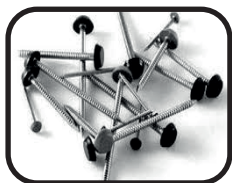


Internal window boards are available in 3 styles.

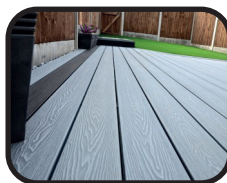
A 9mm Hockey cover board, a 3mm cover cill and a 22mm bullnose laminated window board.

See the following pages for size and colour availability.

End caps and a range of matching trims are available.



PLASTIC PINS



DECKING



WINDOW TRIMS



020 8665 1221



[sales@carltonplastics.co.uk](mailto:sales@carltonplastics.co.uk)

# 9mm Hockey Board

White		Standard Grains				Premium Grains	
Width	White	Blackgrain	Rosewood	Light Oak	Mahogany	White Foil	Irish Oak
150mm	●						
175mm	●		●	●	●		
200mm	●	●	●	●	●	●	
225mm	●		●	●	●	●	●
250mm	●			●			
300mm	●					●	●
405mm	●	●	●	●	●		

Any size board can be colour matched to any RAL number with our colour bonding service.

All lengths are 5000mm.

New grain effect products are becoming available all the time. Please check with us.



INTERNAL PANELS

OVER FASCIA PROTECTOR

CORNERS & JOINTS

# Laminated Window Boards

WINDOWLINE

White		Standard Grains				Premium Grains		
Width	White	Blackgrain	Rosewood	Light Oak	Mahogany	White Foil	Cream Foil	Irish Oak
150mm	●							
200mm	●		●	●				●
225mm	●		●	●				●
250mm	●		●	●				●
300mm	●		●	●				●
600mm	●		●	●				●



All lengths are 5000mm.



END CAP



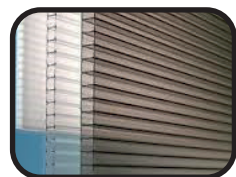
EXTERNAL MITRE



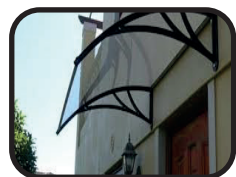
JOINT STRIP



GRP DOOR CANOPIES



POLYCARBONATE



DOOR CANOPIES



020 8665 1221



[sales@carltonplastics.co.uk](mailto:sales@carltonplastics.co.uk)

White		Standard Grains			Premium Grains				
Width	White	Blackgrain	Rosewood	Light Oak	Mahogany	Anthracite Grey	White Foil	Cream Foil	Irish Oak
175mm	●								
240mm	●			●	●				

All lengths are 5000mm.

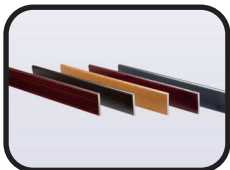


## END CAPS

Available in white, brown or tan.



PLASTIC PINS



TRIMS



GAP FILLER

# External Cills

WINDOWLINE

White		Standard Grains			
Width	White	Blackgrain	Rosewood	Light Oak	Mahogany
<b>Cills</b>					
85mm	●		●	●	
155mm	●	●	●	●	●
180mm	●	●	●	●	
225mm	●		●	●	●
<b>End Caps</b>					
85mm	●			●	●
155mm	●	●		●	●
180mm	●		●	●	
225mm	●		●	●	●



All lengths are 5000mm.



GLUE & ACTIVATOR



FIX ALL



SILICONE



020 8665 1221

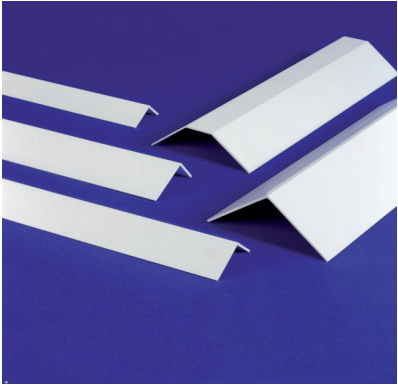


[sales@carltonplastics.co.uk](mailto:sales@carltonplastics.co.uk)

# Rigid and Flexi Angles



	White		Standard Grains				
	White		Blackgrain	Rosewood	Light Oak	Mahogany	Anthracite
Accessory							
Honeycomb 100 X 80	●	●	●	●	●	●	
<b>Rigid Angles</b>							
25/25mm	●	●	●	●	●	●	●
30/30mm	●						
40/40mm	●						
50/50mm	●	●	●	●	●	●	●
60/60mm	●						
80/48mm	●						
100/100mm	●						
<b>Flexi Angles</b>							
25/25mm	●						
35/35mm	●						
50/50mm	●						
75/75mm	●						



All lengths are 5000mm.



END CAPS



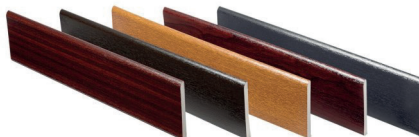
EXTERNAL CILLS



END CAPS

# Trims - Flat Back and Ridge Back

## Flat back



ROUGH GUIDE  
1 GLUE & ACTIVATOR  
= 20m of Trim

Size	White	Blackgrain	Rosewood	Light Oak	Mahogany	Anthracite	Cream Foil
45mm x 5.5mm Architrave	●	●	●	●	●	●	
65mm x 5.5mm Architrave	●	●	●	●	●	●	
95mm x 5.5mm Architrave	●	●	●	●	●	●	

All lengths are  
5000mm.

## Ridge back



Size	Whitegrain	Cream Foil	Irish Oak
40mm x 7mm Architrave	●	●	●
60mm x 7mm Architrave	●	●	●
90mm x 7mm Architrave	●	●	●

## COMING SOON

A range of trims will  
soon be available in

AGATE GREY  
grained

SLATE GREY  
grained &

SLATE GREY  
smooth.

Any size board can be colour  
matched to any RAL number with  
our colour bonding service.

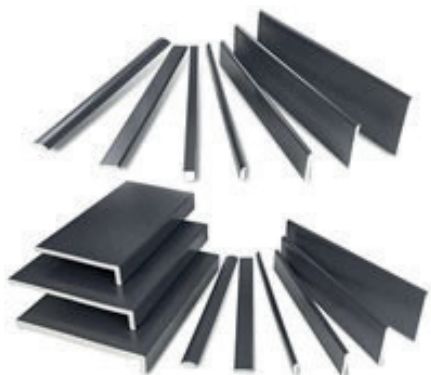


020 8665 1221



[sales@carltonplastics.co.uk](mailto:sales@carltonplastics.co.uk)

# Smooth Black & Smooth 7016 Trims



All lengths are 5000mm.

Description	Black	Grey 7016
17mm Quadrant	✓	✓
20mm/6mm Edge Fillet		✓
28mm/6mm Edge Fillet	✓	
25mm/6mm D Mould		✓
28mm/6mm D Mould	✓	
15mm x 13mm Rectangle	✓	✓
20mm x 25mm Rectangle	✓	✓
45mm/6mm Architrave	✓	✓
65mm/6mm Architrave	✓	
70mm/6mm Architrave		✓
95mm/6mm Architrave	✓	✓



TRIM SNIPS



CLEANING WIPES



PAPER TOWELS

# Window Finishing Trims

WINDOWLINE



White

Size
25mm x 9mm Fillet
28mm x 6mm D Section
28mm x 6mm Batten
12mm Quadrant
19mm Quadrant
20mm x 6mm Edge Fillet

Standard Grains

Premium Grains

White	Blackgrain	Rosewood	Light Oak	Mahogany	Whitegrain	Cream Foil	Irish Oak	Anthracite
•		•						
•	•	•	•	•	•	•	•	•
•								
•	•	•	•	•	•	•		
•	•	•	•	•	•	•	•	•
•	•	•	•	•	•			•

Any size board can be colour matched to any RAL number with our colour bonding service.

All lengths are 5000mm.

New grain effect products are becoming available all the time. Please check with us.



TRIM SNIPS



CLEANING WIPES



PAPER TOWELS



020 8665 1221



[sales@carltonplastics.co.uk](mailto:sales@carltonplastics.co.uk)

# Window Finishing Trims



White

Size
25mm x 4mm D Capping
28mm x 6mm Edge Fillet
15mm x 13mm Rectangle
25mm x 30mm Rectangle
25mm x 20mm Rectangle
19mm x 19mm Square
20mm x 15mm Unitrim

White	Standard Grains				Premium Grains			
	Blackgrain	Rosewood	Light Oak	Mahogany	Whitegrain	Cream Foil	Irish Oak	Anthracite
•		•	•					
•	•	•	•	•	•	•	•	•
•	•	•	•	•				•
•								
•	•	•	•	•	•			
•								
•		•	•	•			•	•

Any size board can be colour matched to any RAL number with our colour bonding service.

New grain effect products are becoming available all the time. Please check with us.

All lengths are 5000mm.



COLOUR BONDING



RAL

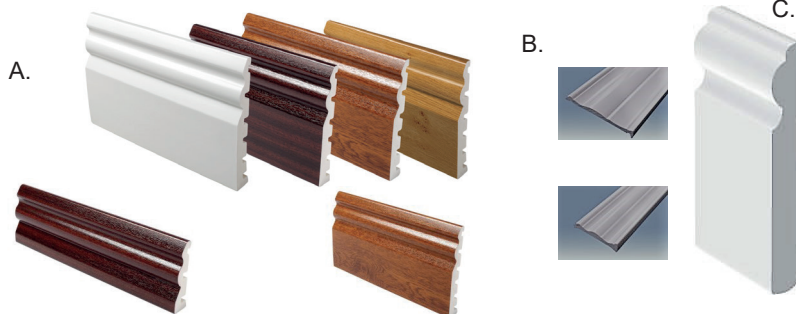


WE DELIVER

# Window Finishing Trims

WINDOWLINE

## Ogee



Size	White	Rosewood	Light Oak	Mahogany	Whitegrain	Irish Oak	Blackgrain	Anthracite
A.								
70mm x 18mm 5.3m	●	●	●	●	●	●	●	●
125mm x 18mm 5m	●	●	●	●	●	●	●	●
B.								
70mm x 13mm 5m	●							
120mm x 13mm 5m	●							
C.								
95mm x 12mm 5m	●							

Any size board can be colour matched to any RAL number with our colour bonding service.

All lengths are 5000mm.

New grain effect products are becoming available all the time. Please check with us.



GLUE & ACTIVATOR



FIX ALL



SILICONE



020 8665 1221



[sales@carltonplastics.co.uk](mailto:sales@carltonplastics.co.uk)



## Accessory

- A. 25mm x 7mm "D" Mould
- A. 50mm x 7mm "D" Mould
- A. 75mm x 7mm "D" Mould
- B. 35mm x 7mm skirting/architrave
- B. 50mm x 7mm skirting/architrave
- B. 75mm x 7mm skirting/architrave
- B. 100mm x 7mm skirting/
- B. 125mm x 7mm skirting/
- C. 45mm x 12mm skirting/
- C. 70mm x 12mm skirting/

White

Any size board can be colour matched to any RAL number with our colour bonding service.

All lengths are 5000mm.

New grain effect products are becoming available all the time. Please check with us.

# Colour Bonding to any RAL

WINDOWLINE

## Looking for trims to match non-standard colour installations?

Our colour bonding service means we can provide trims in any RAL number to match and complete any installation.

Just provide us with the RAL number you require together with the trims you need and finish required for a quotation.



uPVC windows and doors, together with fascia, soffit can also all be colour bonded to match any RAL colour.

Using a specially formulated paint that has been designed to chemically bond with the substrate the bonding process provides a durable finish with flexibility and UV stability while retaining all the benefits of a high quality premium paint.

The paints will not crack, peel or fade and come with a manufacturer's 10 year guarantee.

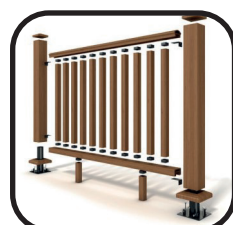
Contact us for costs and lead times.



7016 SMOOTH TRIMS



COMPOSITE DECKING



BALUSTRADES



020 8665 1221



[sales@carltonplastics.co.uk](mailto:sales@carltonplastics.co.uk)

# Decorative & Panel Mouldings

Visit the Trade Counter to see the full range of mouldings available.



# Silicones & Fillers

We stock a range of silicones and fillers to suit all applications.



**Exterior Frame Silicone (Trade)** - Low Modulus Neutral - White, Clear

**Decorators Caulk (Trade)** - Acrylic, Solvent Free - White

## Premium Silicones

**Silirub N** - Low Modulus Neutral - White, Clear

**Silirub LM** - Low Modulus Neutral - Grey (7016)

**Silirub 2** - Low Modulus Neutral - White, Clear, Oak, Toffee & Rosewood

**Silirub A** - Acetoxy Silicon Sealant for sanitary applications - White, Clear

**Soudafalt** - Bitumen based sealant for roof & gutter repairs.

**Soudalead** - Silicone based for sealing between lead, treated wood, metal & PVC

**SMX506** - Glazing sealant developed for self-cleaning glass.

**Mir-o-bond** - Silicone adhesive for bonding mirrors onto most surfaces.

**Stelmax 1961** - Gap filler upto 10mm.



**Gun Grade & Handheld expanding foam** - General purpose gap filling.



020 8665 1221



[sales@carltonplastics.co.uk](mailto:sales@carltonplastics.co.uk)



Soudal combi-box.

6 cans of expanding foam.

Foam applicator gun and 1 can of foam and gun cleaner.

## Frame Cleaner

Suitable for the removal of dirt, pen and pencil marks on all PVCu window and door frames, decorative trims, fascia and cladding.



## Gun & Foam Cleaner

For cleaning of the gun and the valves of the PU foam aerosol and also the removal of uncured foam.



## Glass Cleaner

Cleaning all glass surfaces .

Suitable for large

## Paper Towels



## Cleaning Wipes

Designed for the quick and effective removal of adhesives, sealants, oils, paints and greases from hands, tools and non-porous surfaces.

**SOUDAL**

# Fixings



Does exactly what it says on the tube! All interior and exterior bonding and sealing applications



200ml Activator    50g Glue

Rough guide -

1glue and activator = 20m of trim.



Direct frame anchors for fixing windows and door frames directly into brickwork available in the following sizes:  
(100 per box)

7.5mm x 80mm  
7.5mm x 100mm  
7.5mm x 120mm  
7.5mm x 150mm  
7.5mm x 180mm



Cladding pins



Baypole self drilling PVCu frame screws. Available in the following sizes

4.8mm x 50mm  
4.8mm x 60mm  
4.8mm x 70mm  
4.8mm x 80mm  
4.8mm x 90mm



Plastic headed pins and nails available in a range of colours

Pins 30mm and 40mm  
Nails 50 mm and 65mm





Chisel Knife



PVCu Snips



Moon Knife



10-in-1 Knife



Spare Blades



Heavy Duty Knife



Rubber Mallet



Glass Gauge



"Thor" Hammer



Glazing Shovel



Hacksaw



Handsaw



Glazing Packers  
24,28 & 32mm



Tape measures



Foam Applicator  
& Skeleton guns.

# Cladding Introduction

CLADDING



020 8665 1221



[sales@carltonplastics.co.uk](mailto:sales@carltonplastics.co.uk)

A horizontal strip of weathered, light-colored wood with a rough, textured surface, serving as a background for the text.

## **Fed up with painting?**

PVCu cladding can be used on a variety of exteriors including brick, masonry and concrete. Suitable for a variety of projects for both traditional and contemporary properties, domestic or commercial.

**Shiplap** and **Open V** cladding are available in white and a range of woodgrain effect finishes. It's easy, therefore, to match cladding to PVC woodgrain fascia, windows and doors. These cladding boards can be fitted either horizontally or vertically.

**Quick and easy to install**

**Available in a choice of colours and woodgrain effects**

**Low Maintenance**

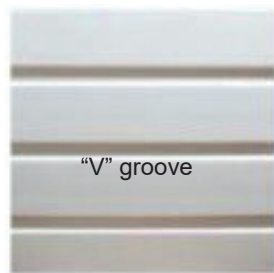
**Range of matching trims**

**Textured** cladding features an authentic embossed wood effect finish and is available in a range of colours in either double shiplap boards or weatherboard. Weatherboard cladding, sometimes known as featheredge cladding, features a tapered board and the overlap creates a "New England" look.

Whether it's a new build project or just refreshing tired old brickwork or timber cladding our range of styles and colours, coupled with matching trims, provides a choice of solutions.

# Shiplap & 'V' Groove

## CLADDING



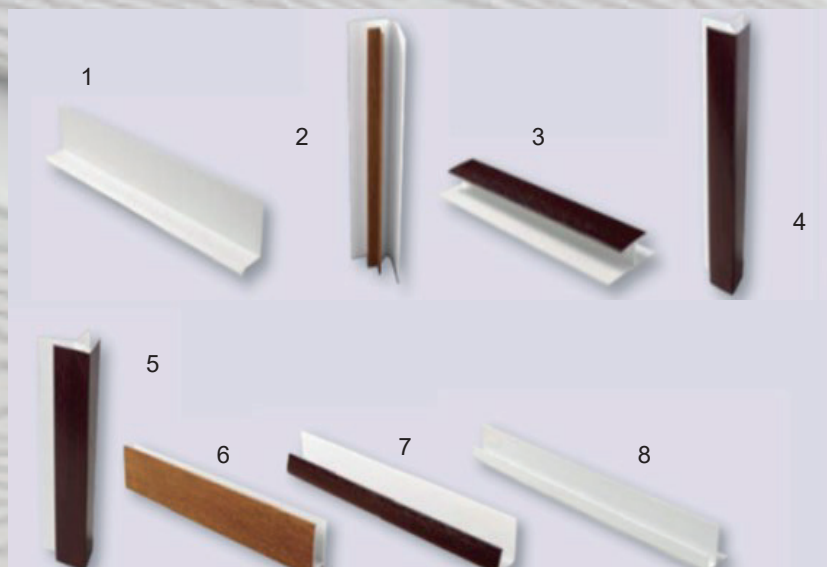
Width	White	Blackgrain	Rosewood	Light Oak	Mahogany	Anthracite Grey
150mm Shiplap Cladding 5m	●	●	●	●	●	●
100mm Open V Cladding 5m	●	●	●	●	●	●



020 8665 1221



[sales@carltonplastics.co.uk](mailto:sales@carltonplastics.co.uk)



- |                         |                                   |
|-------------------------|-----------------------------------|
| 1. Drip Trim            | 5. Two Part Corner Trim           |
| 2. Internal Corner Trim | 6. Two Part Universal Trim        |
| 3. H Joint Trim         | 7. J Trim                         |
| 4. External Corner Trim | 8. Starter Trim with Batten cover |

All lengths are 5000mm

To Calculate the number of lengths required  
divide the square meterage by

0.5 (100mm Cladding)

0.75 (150mm Cladding)

This will give an exact number of lengths - not allowing for wastage

# Textured Cladding

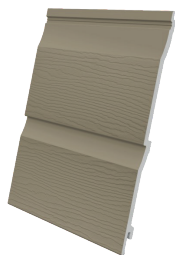
## CLADDING

Embossed cladding provides an attractive, low maintenance, weather resistant solution for replacing rotten timber cladding, concealing unsightly areas of brickwork or adding an interesting new feature to a property.

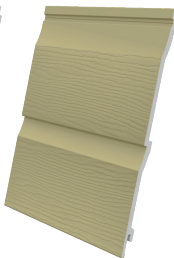


Double shiplap boards are 5m in length and offer coverage of 333mm.

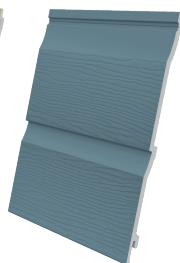
Available in a choice of 9 colours with matching butt joints, corner and edge trims.



Argyl Brown



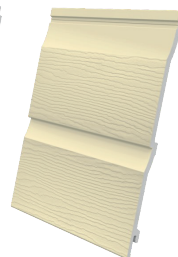
Cappuccino



Colonial Blue



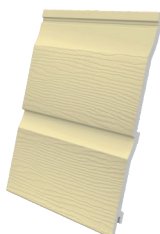
Misty Grey



Pale gold



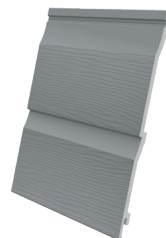
Sage Green



Sand



Slate Grey



Storm Grey



020 8665 1221



[sales@carltonplastics.co.uk](mailto:sales@carltonplastics.co.uk)

Weatherboard cladding boards are 5m in length and offer 170mm coverage. Available in a choice of 8 colours these boards provide a tapered effect “New England” look.



Pale Blue

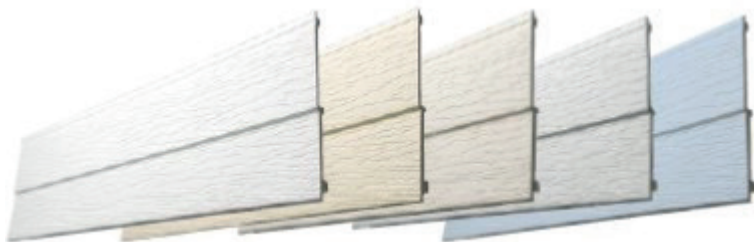


Installation instructions available.

Starter, corner and joint trims are available, many as 2 part trims, for ease of installation.

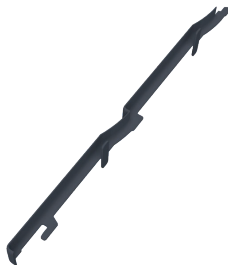
Width	White	Pale Gold	Sand	Misty Grey	Storm Grey	Colonial	Argyl Brown	Slate Grey	Sage Green	Pale Blue	Cappuccino
170mm Weatherboard 5m	●	●	●	●	●	●	●	●	●	●	
333mm Double Shiplap 5m	●	●	●	●	●	●	●	●	●		●

We also offer a range of single and double shiplap together with double featheredge boards in 5 pastel colours: White, Sand, Cream, Light Grey and Light Blue.

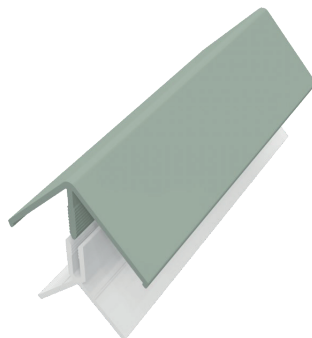
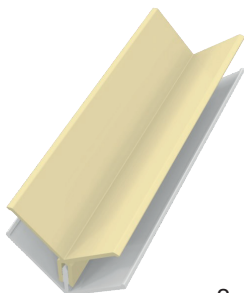


# Textured Cladding Trims

## CLADDING

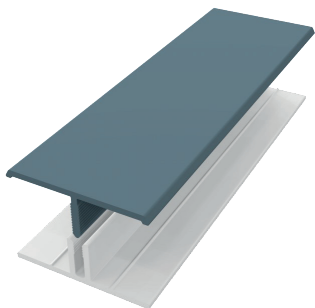


Butt joints available for both weatherboard and double shiplap boards.



2 part external and internal corners allow greater ease in installation.

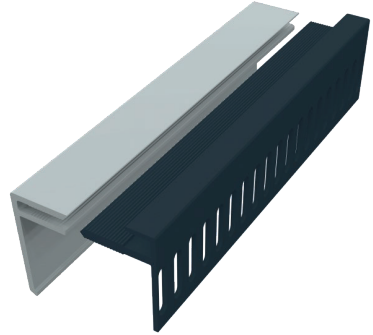
2 part edge trims and H joining trims are available for the perfect finish.



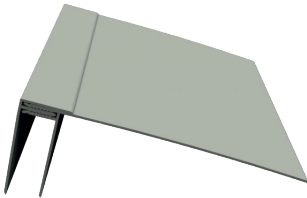
020 8665 1221



[sales@carltonplastics.co.uk](mailto:sales@carltonplastics.co.uk)



The multi-vented starter trim is also available with cover trim to match



Where a greater return is required the 2 part reveal liner provides the perfect finish.

Please note many trims are only available in pack quantities.

Visit [carltonplastics.co.uk](http://carltonplastics.co.uk) and download our installation guide.

Call 020 8665 1221 for a quotation.

# Guttering

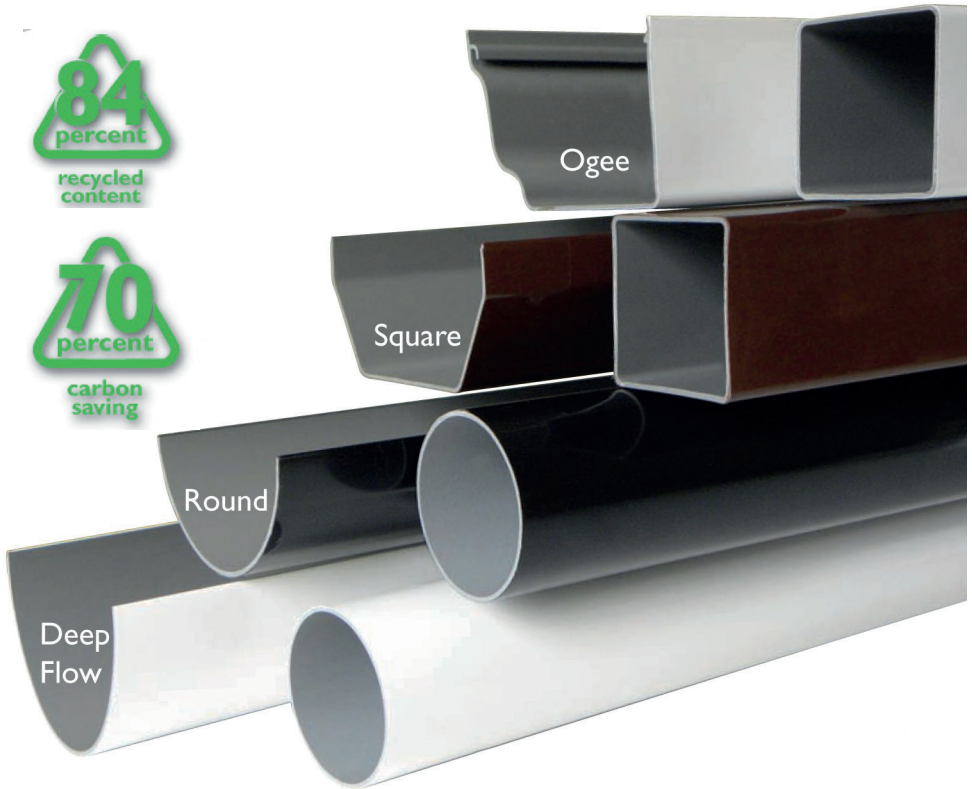
GUTTERING



020 8665 1221



[sales@carltonplastics.co.uk](mailto:sales@carltonplastics.co.uk)



Guttering with a reduced carbon footprint.

Approximately 84%, by weight, is composed of recycled material derived from old PVCu windows and gutter systems.

The grey recycled element has intentionally been left this colour to avoid the unnecessary use of additional colouring agent.

By combining the recycled element with the virgin PVC, that is co-extruded onto the surface, there is a 70% saving in CO<sub>2</sub> compared to producing 100% virgin PVC products.

This leads to a far more sustainable product without any compromise in strength, weather resistance or functionality.

# Half-Round

## GUTTERING



### Colours



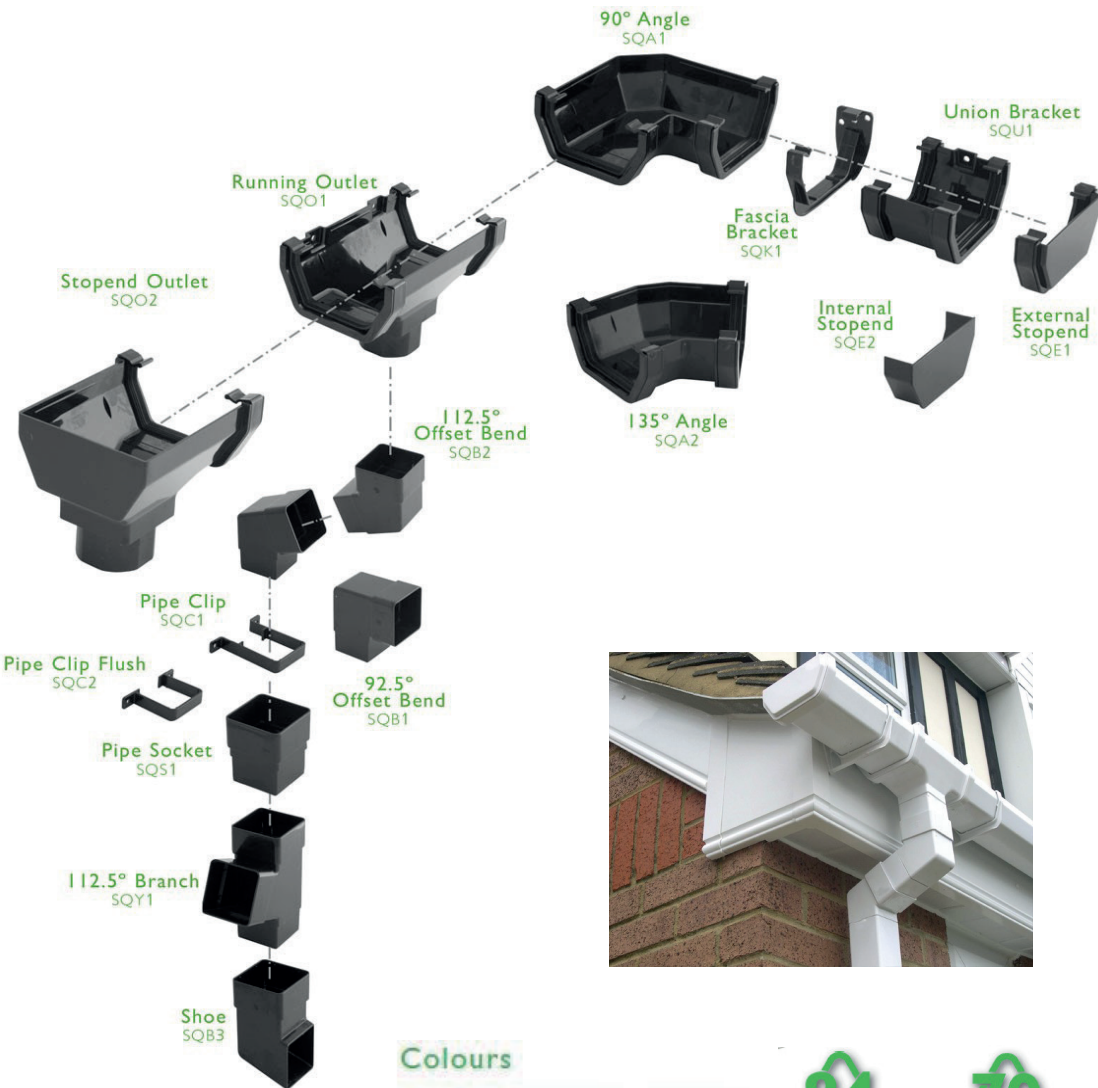
## Half Round System



020 8665 1221



[sales@carltonplastics.co.uk](mailto:sales@carltonplastics.co.uk)



### Colours



## Square System

Top Hung  
Fascia  
Bracket  
SGK1



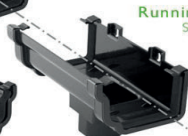
Fascia  
Bracket  
SGK1



90° Internal Angle  
SGA1



Running Outlet  
SGO1



External Stopend  
Right Hand-SGE2  
Left Hand-SGE1

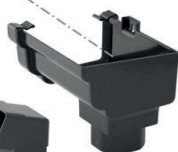


Union Bracket  
SGU1



90° External Angle  
SGA2

Stopend Outlet  
Right Hand-SGO2  
Left Hand-SGO3



112.5°  
Offset Bend  
SQB2



92.5° Offset  
Bend  
SQB1

Pipe Clip  
SQC1



Pipe Clip Flush  
SQC2



Pipe Socket  
SQS1



112.5° Branch  
SQY1



Shoe  
SQB3



Colours



Corners



135° Internal  
Angle  
SGA3



135° External Angle  
SGA4

Also available:  
150° External Angle  
SGA5

Ogee System



020 8665 1221



[sales@carltonplastics.co.uk](mailto:sales@carltonplastics.co.uk)



Deepflow System

# Specifications

## GUTTERING

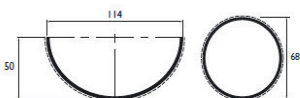
### Half Round Gutter

A traditional half round gutter suitable for application on terrace houses, semi-detached houses and smaller office and commercial buildings.

#### Specification – Gutter Laid Level

Max height of water:	48mm
Short length gutter:	2.4m
Flow rate of short gutter:	0.9 l/s
Max area drained* – End outlet:	43m <sup>2</sup>
Down pipe:	Round

\*At rainfall rate 0.021 l/s (annual storm event)



#### Colours



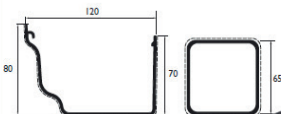
### Ogee Gutter

A modern, high capacity system ideal for larger roofs and where run off is rapid. May be hung on traditional brackets or securely fixed with top hung brackets when clean lines are important. A choice of corner angles that are positively fixed for added security.

#### Specification – Gutter Laid Level

Max height of water:	68mm
Short length gutter:	3.4m
Flow rate of short gutter:	2.2 l/s
Max area drained* – End outlet:	105m <sup>2</sup>
Down pipe:	Round/Square

\*At rainfall rate 0.021 l/s (annual storm event)



#### Colours



Gutter available in 4m Lengths.

Downpipe available in lengths of 2.5m, 4m and 5.5m.

### Gutter Connectors



020 8665 1221



[sales@carltonplastics.co.uk](mailto:sales@carltonplastics.co.uk)

We can provide a range of gutter connectors for use where two different styles of gutter are in place.

## Gutter Connectors



### Square Gutter

Classic square system equally suitable for modern or older housing and often used on conservatories. The higher flow rate has the capacity to drain larger roofs.

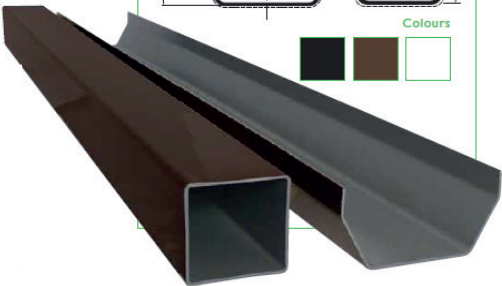
#### Specification – Gutter Laid Level

Max height of water	56mm
Short length gutter	2.7m
Flow rate of short gutter	1.6 l/s
Max area drained* – End outlet	76m <sup>2</sup>
Down pipe	Round/Square

\*At rainfall rate 0.021 l/s (annual storm event)



#### Colours



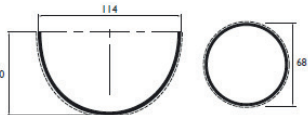
### Deepflow Gutter

A high capacity round system for larger houses and accommodation blocks. The higher flow rate is especially suitable for draining larger roof areas.

#### Specification – Gutter Laid Level

Max height of water	69mm
Short length gutter	3.4m
Flow rate of short gutter	1.8 l/s
Max area drained* – End outlet	86m <sup>2</sup>
Down pipe	Round

\*At rainfall rate 0.021 l/s (annual storm event)



#### Colours



# Cast-Iron Effect

- ◆ Authentic cast iron look without the weight or the cost.
- ◆ Choice of 3 designs - Half Round, Ogee and Deep.
- ◆ Square or round downpipe.
- ◆ Unique pipe fittings with built in saddle strap.
- ◆ Durable and tough.
- ◆ 10 Year Guarantee.



020 8665 1221



[sales@carltonplastics.co.uk](mailto:sales@carltonplastics.co.uk)



# SuperDeep 170

## GUTTERING

SuperDeep 170 is a tough, high capacity gutter for use on commercial buildings, hotels, flats or other structure with a large roof area.

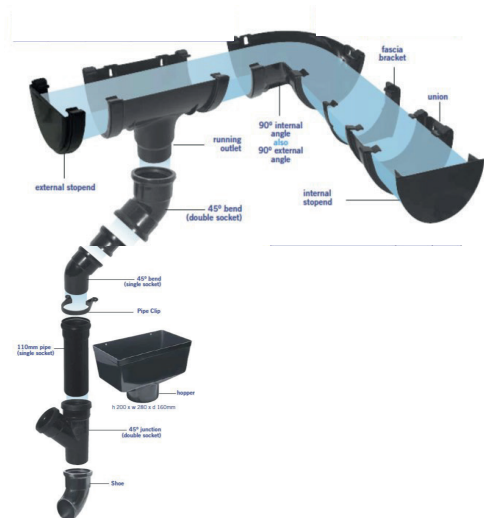
At 170mm from rim to rim the SuperDeep 170 has been designed to move water rapidly into a 100mm or 110mm down pipe.

Independently tested it has a market leading flow rate of 9.4 litres per second when set level and 10.5 litres per second when set at 1.350



SuperDeep 170 compared to conventional deep flow

SuperDeep 170 available in both grey and black.



020 8665 1221



[sales@carltonplastics.co.uk](mailto:sales@carltonplastics.co.uk)

For large commercial and industrial applications. Stormflo 200 offers one of the largest capacity rainwater systems available in the UK today.

160mm downpipe ensures efficient rainwater drainage from even the largest of roof areas. Extra fixing points are provided to withstand heavy snow loading and wind updraughts likely on remote and exposed buildings.



# Soil and Underground Systems

## GUTTERING



020 8665 1221



[sales@carltonplastics.co.uk](mailto:sales@carltonplastics.co.uk)

## Kayflow<sup>®</sup> soil & underground systems



KM 655203



KM 664034

### Kayflow Underground System

- 110mm and 160mm
- Easy fit system
- Lightweight
- Durable and impact resistant

# Guttering

## How much water?

The gutter system must be able to drain the roof during an unusually heavy rainfall event which lasts at least two minutes.

BS12056 shows how to work out the amount of rainwater (in litres per second) that could run off a roof.

The roof area is multiplied by the amount of water running off each square metre of the roof area in litres per second

Volume of water coming off a roof

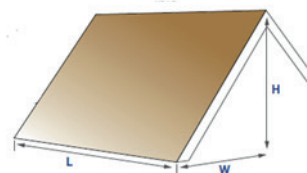
=  $A \times B$  where:

$A = 0.021$  litres per second.

$B$  = the effective roof area, calculated as follows:

$(W + H/2) \times L$  or  $L \times W \times \text{Pitch factor}$   
(see below)

Roof Pitch	Pitch Factor
10°	1.088
20°	1.182
30°	1.288



$W$  = Eaves to below the ridge

$H$  = Vertical height from eaves to ridge

$L$  = Length of roof section.

## Which gutter to choose

Compare the calculation ( $A \times B$ ) with the flow capacity table opposite.  
Please note :

- ◆ Reduce the flow rate of gutters with angles by 15%
- ◆ Gutter sections longer than the “short” length ie 50 x height of water when full will have a reduced flow rate.
- ◆ Gutters are laid level—3mm fall per metre
- ◆ Centrally placed outlets drain a much larger volume of water.

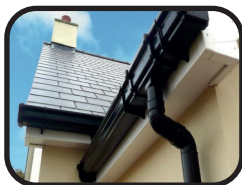


## Flow Capacity End outlet

Gutter Type	Flow Rate	Area drained m2	"short" length gutter	Downpipe
Half Round	0.9l/s	43	2.4m	68mm Round
Square	1.6l/s	76	2.7m	68mm Round/65mm Square
Deepflow	1.8l/s	86	3.4m	68mm Round
Ogee	2.2l/s	105	3.4m	68mm Round/65mm Square
SuperDeep	4.3l/s	205	5.45m	100/110mm Round
C/I Half Round	0.9l/s	43	2.4m	68mm Round
C/I Ogee	2.2l/s	105	3.4m	68mm Round/65mm
C/I Deep	1.8l/s	86	3.4m	68mm Round



PLASTIC PINS



OGEERUTTERING



GLUE & ACTIVATOR

# Guttering

**Preparation:** Ensure fascias are straight and true.

**Position:** The gutter should be fitted as high as possible up to the edge of the roof. Downpipes should be located directly above drain opening.

**Installation:** Fix the end fascia bracket to the fascia board within 75mm of where the stopend or corner will be located. Tie a plumb line to the end bracket and feed it through the outlet. This allows the accurate positioning of the outlet above the drain.

Fit intermediate brackets and gutter unions in place using the plumb line as a guide. Feed the back edge of the gutter fully under the back clips of the brackets, unions, corners etc. Ensure the gutter ends line up with the markings on the inside of each union or outlet, to allow for thermal movement, and push the front clips fully over the gutter edge.

- ◆ Fascia brackets must be used within 150mm of any gutter fitting.
- ◆ Use all fixing positions on unions, angles and outlets for all systems.
- ◆ Whilst it is best practice to make use of all available fixing holes for gutter brackets, the specification in the table opposite may be adopted. Ensure fixings are long enough to penetrate the rear face of the board. If the PVC fascia board is less than 16mm thick, install a backing board to accept gutter bracket fixings. The gutter should be fitted as high as possible but not such that the outer edge projects above the line of the roof.
- ◆ For all gutters, the tile overhang from the fascia board should be no more than 50mm



OFFSET BENDS



DOWNPIPE CLIPS



GUTTER GUARD



## Specifications for gutter bracket fixings

Gutter Type	Normal/Sheltered Areas	Snowfall/Exposed Areas	Max Distance between brackets
Half Round	2 x 25 x 4mm Or 1 x 32 x 5mm	2 x 25 x 5mm	1.0m
Square	2 x 25 x 4mm	2 x 25 x 5mm	1.0m
Deepflow	2 x 25 x 4mm	2 x 25 x 5mm	0.8m
Ogee	2 x 25 x 4mm	2 x 25 x 5mm	0.8m
SuperDeep	2 x 25 x 4mm	3 x 32 x 6.5mm	0.6m
Cast Iron	2 x 25 x 4mm	3 x 25 x 5mm	1.0m

**Pipes:** The offset or “swan neck” in the pipe is formed by using two 112 degree bends to return the pipe to the wall. If the soffit is small and the two offset units need to be close they will still require a small section of pipe between them to make the joint fit properly. It is important to allow for expansion of the main pipe and this is best concealed in the offset or pipe socket. Allow 10mm expansion gap per 5m of pipe.



90 DEGREE ANGLE



HOPPER

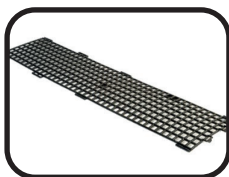


FASCIA BRACKET

# Gutter Checklist

## Checklist Gutter

1. Choose style required
2. Colour
3. Total length of Gutter
4. Union brackets
5. Angles
6. Running Outlets
7. Stop End Outlets
8. Stop Ends
9. Fascia brackets
10. Connectors to other styles
11. Pins/Gutter screws
12. Silicone
13. Soudafalt



LEAF GUARD



WE DELIVER



UNION BRACKET



020 8665 1221

[sales@carltonplastics.co.uk](mailto:sales@carltonplastics.co.uk)

## Checklist Downpipe

- |     |                            |
|-----|----------------------------|
| 1.  | Round or Square            |
| 2.  | Colour                     |
| 3.  | Length (2.5,4.0,5.5m)      |
| 4.  | Downpipe Clips             |
| 5.  | Offset bends               |
| 6.  | Pipe connectors            |
| 7.  | Branch                     |
| 8.  | Shoes                      |
| 9.  | Hoppers                    |
| 10. | Connectors to other styles |
| 11. | Silicone                   |
| 12. | Soudafalt                  |



PIPE CONNECTOR



CAST IRON EFFECT



HOPPER

# Casement Windows and Doors

## WINDOWS AND DOORS



## PVCu Windows & Doors

Our PVCu windows and doors are Linar profile.

Linar 10 Year Product Guarantee : Linar products are manufactured using revolutionary technology from approved suppliers and will not warp, split or discolour for 10 years from date of installation. Further details, weathering data and full conditions can be supplied on request. All products are to be installed to Linar recommendations.

They are available in a range of styles together with a choice of glass, handles, hinges and obscure glass. Astragal or Georgian bars are also available.

Double glazed units are guaranteed for 5 years. Full conditions can be supplied on request.



020 8665 1221



[sales@carltonplastics.co.uk](mailto:sales@carltonplastics.co.uk)



## Bi-Fold Doors

Create the “wow” factor in your home and bring the outside in.

We offer bi-fold doors from 2 manufacturers so you can be sure we have the right style, colour, foiled effect or size of doors for your installation.

Our website has a section on FAQs you may want to consider before choosing your bi-fold doors.

## Composite Doors

Visit our website to see the full range of contemporary or traditional styles in wood composite or wood/PVCu composite doors.

Alternatively a brochure is available on request.



# Window Styles



## Casement Windows

- ◆ Durable Hardware
- ◆ Sculptured or Chamfered Rebate
- ◆ Secured By SAC
- ◆ Hinge Protection
- ◆ Slim Sightlines
- ◆ Multi-Chambered
- ◆ A+ Energy Rated



## Tilt and Turn Windows

- ◆ Secure ventilation
- ◆ Integrated Hardware
- ◆ Uninterrupted Seal
- ◆ Corrosion Resistance
- ◆ Quick-to-Clean



## French Casement Windows

- ◆ Flying Mullion
- ◆ Controlled Ventilation
- ◆ 90° Hinge opening
- ◆ Fire Escape
- ◆ Environmentally friendly
- ◆ Easy to Clean



## Vertical Sliders

- ◆ Run through Horns
- ◆ Spring Balance
- ◆ Concealed Gaskets
- ◆ Tilt Function
- ◆ High Security



## Sash Horn Windows

- ◆ Authentic Looks
- ◆ Hand Finished
- ◆ Security Assured
- ◆ Yale 10 Year Guarantee
- ◆ Integrated Horns
- ◆ Superior Weather Sealing



# Hinge Options



## Standard Hinge

- ◆ Anti-Corrosion
- ◆ Smooth and trouble free operation



## Egress (Fire) Hinge

- ◆ All the benefits of the standard hinge
- ◆ Optimised stay arm geometry
- ◆ Increased clear opening area to aid escape in the event of fire.



## Easy Clean Hinge

- ◆ Provide same safety features as the egress hinge
- ◆ Provides access to both sides of the window for easy cleaning.



## Mega Egress Hinge

- ◆ Highest specification
- ◆ Increased load bearing capacity
- ◆ Necessary with all triple glazing



## Handle Colours



White



Black



Chrome

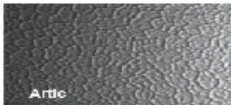


Gold



Silver

## Obscure Glass



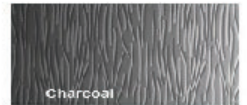
Artic



Autumn Leaf



Chantilly



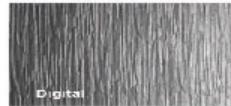
Charcoal



Contora



Cotswold



Digital



Everglade



Flemish



Florilla



Mayflower



Minister



Oak



Polarina



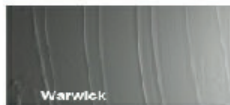
Stippolyte



Sycamore



Taffeta



Warwick

# Victorian Slider PVCu Sash Windows

## WINDOWS AND DOORS



Stylish, secure and energy efficient vertical sliders to suit every type of home!

Vertical sliders are a traditional style of window. Commonly found in older properties, they are usually manufactured from timber. This elegant type of window is a popular replacement in period houses, its design giving your home a sophisticated charm and style. Real timber windows can be expensive so homeowners look to more affordable solutions such as PVCu. PVCu sash windows are thermally efficient and environmentally friendly which imitate the charm of a classic timber vertical slider, but have all the benefits of a modern PVCu system, giving you the best of both worlds. Whether you live in an older property or a more modern home, PVCu sash windows are a cost-effective solution for replacing timber sash windows or as an alternative to other styles. We can even install splay and 90° bay styles. Choose from a range of colour and hardware options to complete your window and create a look that fits in perfectly with your home.



020 8665 1221



[sales@carltonplastics.co.uk](mailto:sales@carltonplastics.co.uk)



Sash Lift

Used for opening and closing the bottom sash. Two Sash Lifts are fitted as standard.



Pole Eye

For opening and closing the top sash. Two Pole Eyes are fitted as standard.



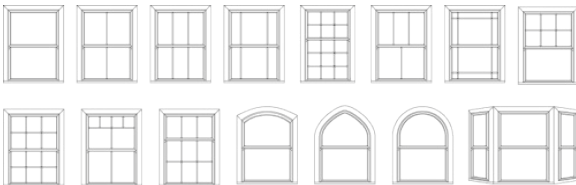
Tilt Knob

Allow inward tilting of the sliding sashes for easy and safe cleaning from inside the home. Two Tilt Knobs are fitted as standard.



Sash Lock

Lock both bottom and top sashes firmly in place when the window is fully closed. Key lockable. One Sash lock is fitted to windows up to 799mm wide. Two are fitted on windows 800mm wide and over.



Windows are available in a range of popular sash window design styles to provide 21st century modern replacements for original windows, including splayed and 90° box bay-style windows. Bespoke units are also available in architectural shapes such as True Arch, Gothic Arch and Swept Head windows. Transom drops are 50/50 split as standard. Other transom drops can be manufactured to order, but the transom drop will be determined by the grid layout.



Available in white or cream as standard or in a choice of woodgrain effect foils.

Windows can also be supplied colour matched to any RAL number.

# PVCu Doors

Our complete range of PVCu doors are the most technically advanced, secure and versatile in the marketplace. All of our Liniar doors are supplied in the same range of foil colours as our other products, guaranteeing a constant colour match.



## French Doors



## Residential Doors



### **Hand Finished PVCu Doors**

A skilled operative completes a stringent hand finishing process on all our Liniar doors. Therefore, we only supply our customers with Liniar doors of the highest quality.

### **Environmentally Friendly**

Liniar profile is 100% lead free and made from 100% recyclable materials.

### **Superior Gaskets**

Liniar doors use patented double action bubble gaskets which provide enhanced levels of weather tightness and durability.

### **10 Year Guarantees**

All of our PVCu Liniar door frames come with a 10 year manufacturer's guarantee from Liniar against cracking, warping and discolouration.



020 8665 1221



[sales@carltonplastics.co.uk](mailto:sales@carltonplastics.co.uk)

### **Versatility & Choice**

By using a standard 28mm or 36mm unit, we can supply our complete range of residential Linar doors with a choice of glazing options. We can also make door and side screen combinations within a single outer frame.

**Patio Doors**



**Stable Doors**



### **Exclusive Astragal Bar Options**

Our entire selection of PVCu Residential doors is available with the exclusive 20mm astragal bar option in the complete range of colours.

### **Yale Maximum Security Locking Systems**

Our Residential, French and Patio Linar doors come with Yale high security locking systems as standard. This Includes Yale's ModLok™ on our Patio Plus range and Lockmaster multipoint locks on French and Residential doors.

### **Accreditations**

Approved Linar profile fabricator -  
Kitemark Licence KM 587164

BSI specified enhanced security  
performance - Kitemark Licence  
BS 7412 / PAS 24

Secured by Design accredited doors  
Secured by Design Licence holder



# PVCu Replacement Door Panels

WINDOWS AND DOORS



## Standard

We stock both 24mm and 28mm white standard panels and white reinforced panels.

20mm and sculptured panels are available to order.

Panels are available in 5 sizes which can be **CUT TO EXACT SIZE**.

3000 x 1500

3000 x 750

1500 x 750

1500 x 1500

750 x 750



## MDF Reinforced



020 8665 1221



[sales@carltonplastics.co.uk](mailto:sales@carltonplastics.co.uk)

## Woodgrain



Woodgrain replacement panels are available in

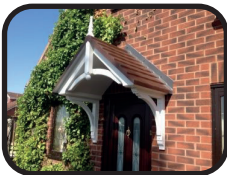
Rosewood, Golden Oak, Black Grain, Mahogany and Anthracite Grey grain.

Panels can be supplied with woodgrain on both sides or one side with white on the other.

Panels are available in 2 sizes and can be **CUT TO EXACT SIZE** as required

2100 x 900

1050 x 900



GRP DOOR CANOPIES



COMPOSITE DOORS



DOOR CANOPIES

# Composite Doors

**Our range of composite doors offer security and style.**



Choose

Your preferred door style.

Pick a colour from the huge range.

Add side panels if required.

Decide on the design of your glass.

Match your choice of hardware.



020 8665 1221



[sales@carltonplastics.co.uk](mailto:sales@carltonplastics.co.uk)

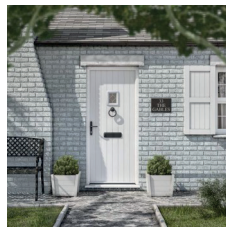
# Composite Doors



With classic, contemporary and cottage style composite doors available it's easy to find the right door for every property.

Available in a choice of standard, standard plus and premium colours or sprayed to one of over 1600 RAL colour options.

Handles, letter plates, knockers, spyhole viewers and weather bars are available in a range of styles and colours to complete your design.



Your choice of glass designs includes contemporary and traditional designs to compliment your choice of composite door.

You can even personalise your glass design with your house name or number.

Direct digital glass printing even allows you to incorporate your favourite image or photograph.



# Bi-Fold Doors

## WINDOWS AND DOORS



Bi-Fold doors are typically a set of two or more standard size glass doors that open in a concertina style and neatly fold flat when open.

The doors open fully to seamlessly connect your living space with your patio, garden or terrace.

Maximising the amount of light that comes into your home as well as providing uninterrupted views they provide an instant wow factor.

Visit our website for full details on the range of Bi-fold doors we offer and also for the list of FAQs you may wish to consider before choosing your Bi-fold doors.



020 8665 1221



[sales@carltonplastics.co.uk](mailto:sales@carltonplastics.co.uk)

## Choosing a bi-fold door.

### **Where are the doors located?**

If your property is exposed or subject to high winds and inclement weather you may wish to order a set of doors with a lower U-value or even triple glazing. This means they will be more efficient at keeping the cold out.

You may also find a standard threshold appropriate for increased weather tightness.

### **Should doors open inwards or outwards?**

If you wish to maximise space inside your room then bi-folding doors that fold on the outside will usually be preferable. If the outside space is restricted then select doors which open inwards. Consideration should be given to internal furnishing and curtains.

### **Will the doors be used as a main entrance?**

If so, you may wish to consider a set of bi-folds with one door that opens independently of the other panes, like a normal hinged door, thus avoiding the need to fold back the full set each time. This may be particularly appropriate for letting pets outside regularly.

### **Do the doors need to match your windows?**

If you have PVCu windows on the same elevation of the property, you may wish to select a fully matching aluminium bi-fold door.

Alumina allows you to choose from a wide range of foiled finishes, or you can ask for a powder-coated finish in almost any colour.

### **Consider the size of your aperture and configuration required.**

Determine the configuration dependent upon the width and number of panes required. As few panes as possible gives more glass and less visible frame, and the cost should be lower too.

### **Do you need low threshold access?**

There are three types of thresholds available, none of which need involve any excavation work, as they've been cleverly designed to sit on existing flooring. You can also choose a half-tray so that your interior floor can fully butt right up to the doors.

# Bi-Fold Doors - AluK

## WINDOWS AND DOORS



- Wide range of configuration options
- High performance glazing and design
- Minimal profiles for a modern look
- Complete range of handles and accessories
- Unique flush line pop-out handle option
- Full range of standard and bespoke colours
- Dual colour option for inside and out
- Chamfered and square bead options
- Tested to PAS24 for enhanced security
- Sturdy and reliable sliding mechanism
- Low threshold option for room dividers
- High performance as standard
- Can easily be combined with all AluK window and doors.
- U-value = 1.7 W/m2K



020 8665 1221



[sales@carltonplastics.co.uk](mailto:sales@carltonplastics.co.uk)



AluK's stylish but practical bi-fold doors are built to your needs, offering you a bespoke solution every time, from the configuration of the doors to the handles, accessories and colour, making AluK bi-fold doors the perfect addition to your home.



# Polycarbonate Sheet

Multiwall sheet is a lightweight insulating glazing material manufactured from damage resistant polycarbonate. Added Long life protection provides resistance against the effects of UV weathering.

- ♦ Energy saving
- ♦ Optically clear
- ♦ Thermally insulating
- ♦ Lightweight and easy to handle
- ♦ Natural light transmission
- ♦ Structural durability
- ♦ Impact resistant
- ♦ Weatherable and UV resistant

Polycarbonate is available in a range of styles and thicknesses for a variety of applications.

We supply a range of glazing bars, sheet closures and accessories for self-supporting and timber supported roofs.

Ideal for

- ♦ Conservatories
- ♦ Canopies
- ♦ Covered Walkways
- ♦ Vertical Glazing
- ♦ Greenhouses
- ♦ Pool Covers

When it comes to working out the most effective way to buy your polycarbonate sheet why not let us do the calculations for you.

Let us know the overall external size of your roof and we'll work out the most cost effective way to provide the correct sheet for you.

## NEED ADVICE

CALL OUR EXPERIENCED TEAM

ON 020 8665 1221

## NEED ADVICE

EMAIL OUR EXPERIENCED  
TEAM

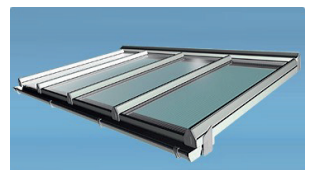
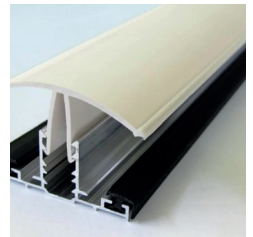
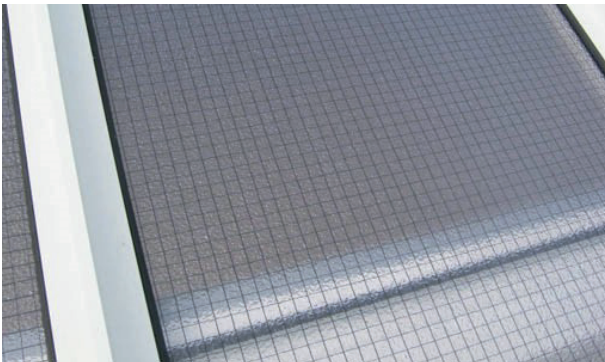
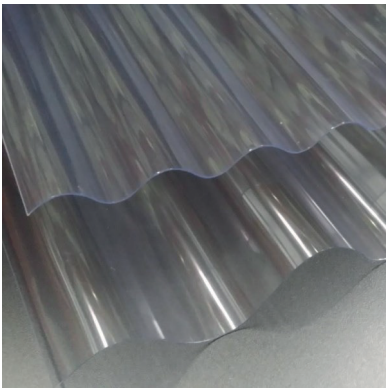
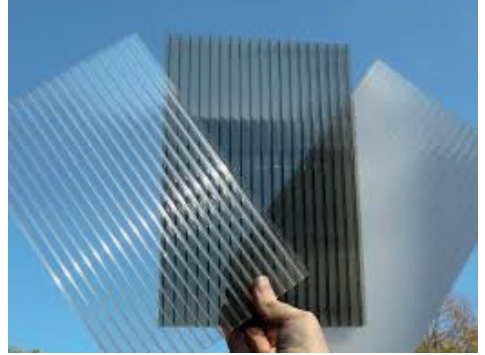
[sales@carltonplastics.co.uk](mailto:sales@carltonplastics.co.uk)



020 8665 1221



[sales@carltonplastics.co.uk](mailto:sales@carltonplastics.co.uk)

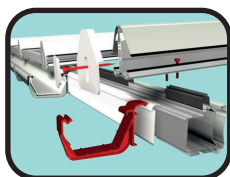


# Clear

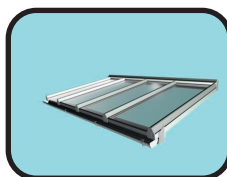
## POLYCARBONATE SHEET AND GLAZING BARS

Clear	Size	10mm	16mm	25mm	35mm
	2000 x 700mm	●	●	●	●
Length	2500 x 700mm	●	●	●	●
X	3000 x 700mm	●	●	●	●
Width	3500 x 700mm	●	●	●	●
	4000 x 700mm	●	●	●	●
	4500 x 700mm	●	●	●	●
	5000 x 700mm	●	●	●	●
	6000 x 700mm	●	●	●	●
	7000 x 700mm	●	●	●	●
	2000 x 1050mm	●	●	●	●
Length	2500 x 1050mm	●	●	●	●
X	3000 x 1050mm	●	●	●	●
Width	3500 x 1050mm	●	●	●	●
	4000 x 1050mm	●	●	●	●
	4500 x 1050mm	●	●	●	●
	5000 x 1050mm	●	●	●	●
	6000 x 1050mm	●	●	●	●
	7000 x 1050mm	●	●	●	●

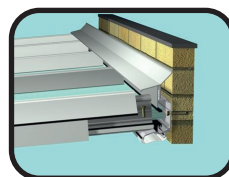
● - Available either in stock or to order



EAVESBEAM



SELF-SUPPORTED ROOF SYSTEM



WALLPLATE



020 8665 1221



[sales@carltonplastics.co.uk](mailto:sales@carltonplastics.co.uk)

Clear	Size	10mm	16mm	25mm	35mm
	2000 x 1400mm	●	●	●	●
Length	2500 x 1400mm	●	●	●	●
X	3000 x 1400mm	●	●	●	●
Width	3500 x 1400mm	●	●	●	●
	4000 x 1400mm	●	●	●	●
	4500 x 1400mm	●	●	●	●
	5000 x 1400mm	●	●	●	●
	6000 x 1400mm	●	●	●	●
	7000 x 1400mm	●	●	●	●
	2000 x 2100mm	●	●	●	●
Length	2500 x 2100mm	●	●	●	●
X	3000 x 2100mm	●	●	●	●
Width	3500 x 2100mm	●	●	●	●
	4000 x 2100mm	●	●	●	●
	4500 x 2100mm	●	●	●	●
	5000 x 2100mm	●	●	●	●
	6000 x 2100mm	●	●	●	●
	7000 x 2100mm	●	●	●	●

● - Available either in stock or to order



FOILBAND



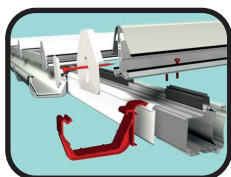
ROOF DOMES



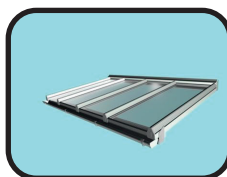
BREATHER TAPE

Opal	Size	10mm	16mm	25mm	35mm
	2000 x 700mm	●	●	●	●
Length	2500 x 700mm	●	●	●	●
X	3000 x 700mm	●	●	●	●
Width	3500 x 700mm	●	●	●	●
	4000 x 700mm	●	●	●	●
	4500 x 700mm	●	●	●	●
	5000 x 700mm	●	●	●	●
	6000 x 700mm	●	●	●	●
	7000 x 700mm	●	●	●	●
	2000 x 1050mm	●	●	●	●
Length	2500 x 1050mm	●	●	●	●
X	3000 x 1050mm	●	●	●	●
Width	3500 x 1050mm	●	●	●	●
	4000 x 1050mm	●	●	●	●
	4500 x 1050mm	●	●	●	●
	5000 x 1050mm	●	●	●	●
	6000 x 1050mm	●	●	●	●
	7000 x 1050mm	●	●	●	●

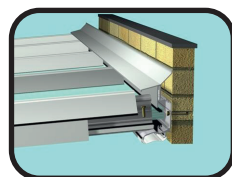
● - Available either in stock or to order



EAVESBEAM



SELF-SUPPORTED ROOF SYSTEM



WALLPLATE



020 8665 1221



[sales@carltonplastics.co.uk](mailto:sales@carltonplastics.co.uk)

Opal	Size	10mm	16mm	25mm	35mm
	2000 x 1400mm	●	●	●	●
Length	2500 x 1400mm	●	●	●	●
X	3000 x 1400mm	●	●	●	●
Width	3500 x 1400mm	●	●	●	●
	4000 x 1400mm	●	●	●	●
	4500 x 1400mm	●	●	●	●
	5000 x 1400mm	●	●	●	●
	6000 x 1400mm	●	●	●	●
	7000 x 1400mm	●	●	●	●
	2000 x 2100mm	●	●	●	●
Length	2500 x 2100mm	●	●	●	●
X	3000 x 2100mm	●	●	●	●
Width	3500 x 2100mm	●	●	●	●
	4000 x 2100mm	●	●	●	●
	4500 x 2100mm	●	●	●	●
	5000 x 2100mm	●	●	●	●
	6000 x 2100mm	●	●	●	●
	7000 x 2100mm	●	●	●	●

● - Available either in stock or to order



FOILBAND



ROOF DOMES



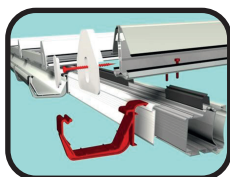
BREATHER TAPE

# Bronze

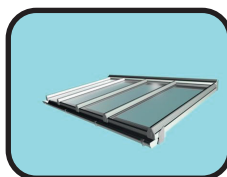
## POLYCARBONATE SHEET AND GLAZING BARS

Bronze	Size	10mm	16mm	25mm	35mm
	2000 x 700mm	●	●	●	●
Length	2500 x 700mm	●	●	●	●
X	3000 x 700mm	●	●	●	●
Width	3500 x 700mm	●	●	●	●
	4000 x 700mm	●	●	●	●
	4500 x 700mm	●	●	●	●
	5000 x 700mm	●	●	●	●
	6000 x 700mm	●	●	●	●
	7000 x 700mm	●	●	●	●
	2000 x 1050mm	●	●	●	●
Length	2500 x 1050mm	●	●	●	●
X	3000 x 1050mm	●	●	●	●
Width	3500 x 1050mm	●	●	●	●
	4000 x 1050mm	●	●	●	●
	4500 x 1050mm	●	●	●	●
	5000 x 1050mm	●	●	●	●
	6000 x 1050mm	●	●	●	●
	7000 x 1050mm	●	●	●	●

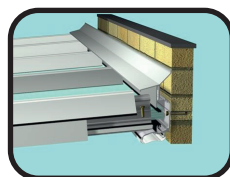
● - Available either in stock or to order



EAVESBEAM



SELF-SUPPORTED ROOF SYSTEM



WALLPLATE



020 8665 1221



[sales@carltonplastics.co.uk](mailto:sales@carltonplastics.co.uk)

Bronze	Size	10mm	16mm	25mm	35mm
Length	2000 x 1400mm	●	●	●	●
	2500 x 1400mm	●	●	●	●
X	3000 x 1400mm	●	●	●	●
Width	3500 x 1400mm	●	●	●	●
	4000 x 1400mm	●	●	●	●
	4500 x 1400mm	●	●	●	●
	5000 x 1400mm	●	●	●	●
	6000 x 1400mm	●	●	●	●
	7000 x 1400mm	●	●	●	●
Length	2000 x 2100mm	●	●	●	●
	2500 x 2100mm	●	●	●	●
X	3000 x 2100mm	●	●	●	●
Width	3500 x 2100mm	●	●	●	●
	4000 x 2100mm	●	●	●	●
	4500 x 2100mm	●	●	●	●
	5000 x 2100mm	●	●	●	●
	6000 x 2100mm	●	●	●	●
	7000 x 2100mm	●	●	●	●

● - Available either in stock or to order



FOILBAND



ROOF DOMES



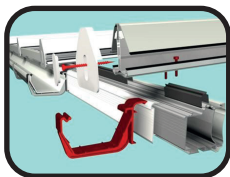
BREATHER TAPE

# Silver Athermic

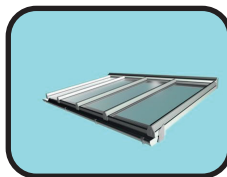
## POLYCARBONATE SHEET AND GLAZING BARS

Athermic	Size	10mm	16mm	25mm	35mm
	2000 x 700mm	×	×	●	●
Length	2500 x 700mm	×	×	●	●
X	3000 x 700mm	×	×	●	●
Width	3500 x 700mm	×	×	●	●
	4000 x 700mm	×	×	●	●
	4500 x 700mm	×	×	●	●
	5000 x 700mm	×	×	●	●
	6000 x 700mm	×	×	●	●
	7000 x 700mm	×	×	●	●
	2000 x 1050mm	×	×	●	●
Length	2500 x 1050mm	×	×	●	●
X	3000 x 1050mm	×	×	●	●
Width	3500 x 1050mm	×	×	●	●
	4000 x 1050mm	×	×	●	●
	4500 x 1050mm	×	×	●	●
	5000 x 1050mm	×	×	●	●
	6000 x 1050mm	×	×	●	●
	7000 x 1050mm	×	×	●	●

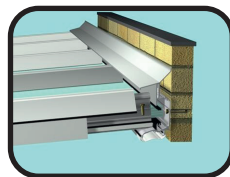
● - Available either in stock or to order    × - Unavailable



EAVESBEAM



SELF-SUPPORTED ROOF SYSTEM



WALLPLATE



020 8665 1221



[sales@carltonplastics.co.uk](mailto:sales@carltonplastics.co.uk)

Athermic	Size	10mm	16mm	25mm	35mm
	2000 x 1400mm	×	×	●	●
Length	2500 x 1400mm	×	×	●	●
X	3000 x 1400mm	×	×	●	●
Width	3500 x 1400mm	×	×	●	●
	4000 x 1400mm	×	×	●	●
	4500 x 1400mm	×	×	●	●
	5000 x 1400mm	×	×	●	●
	6000 x 1400mm	×	×	●	●
	7000 x 1400mm	×	×	●	●
	2000 x 2100mm	×	×	●	●
Length	2500 x 2100mm	×	×	●	●
X	3000 x 2100mm	×	×	●	●
Width	3500 x 2100mm	×	×	●	●
	4000 x 2100mm	×	×	●	●
	4500 x 2100mm	×	×	●	●
	5000 x 2100mm	×	×	●	●
	6000 x 2100mm	×	×	●	●
	7000 x 2100mm	×	×	●	●

● - Available either in stock or to order    × - Unavailable



FOILBAND



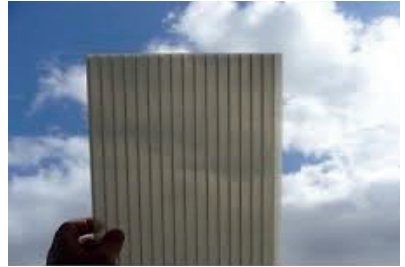
ROOF DOMES



BREATHER TAPE

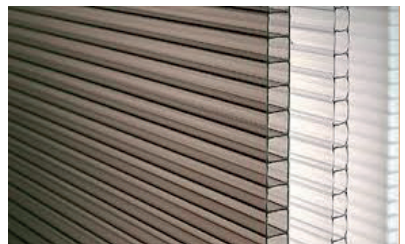
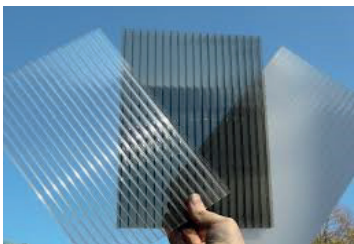
# Polycarbonate Sheet

## POLYCARBONATE SHEET AND GLAZING BARS



Light transmission and UV across the range of sheets.

	U Value	Clear	Bronze	Opal	Bronze Opal	Silver
10mm	3.2	82%	33%	40%		
16mm	2.4	77%	18%	42%		
25mm	1.6	68%	11%	30%	8%	7%
35mm	1.2	63%	7%	33%	7%	4%



CARPORTS



FIXING BUTTONS



POOL COVER



020 8665 1221



[sales@carltonplastics.co.uk](mailto:sales@carltonplastics.co.uk)

## Kit Roof Service

Complete Roof: pre-cut and pre-drilled

Delivered to Site

Easy to Install

Supplied with Guttering

## Includes

- ♦ 25/35mm Polycarbonate Sheet
- ♦ Or 24mm Sealed Units
- ♦ Anti Dust tape
- ♦ Sheet Closure
- ♦ Centre bars
- ♦ Edge bars
- ♦ Wall Plate
- ♦ Eaves Beam
- ♦ End Caps
- ♦ Guttering

Call 020 8665 1221

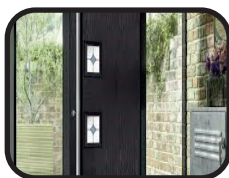
Or email

[sales@carltonplastics.co.uk](mailto:sales@carltonplastics.co.uk)

For your no obligation  
quote



ARCHITRAVE



COMPOSITE DOORS



ROOF DOMES

# Self - Supporting Bars

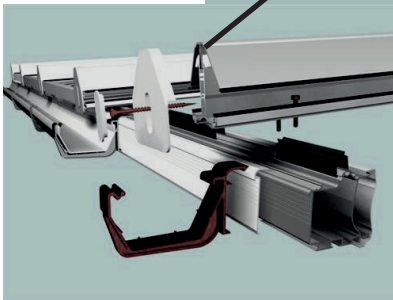
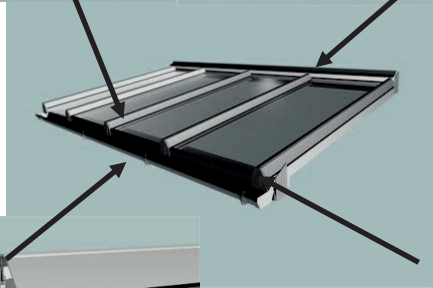
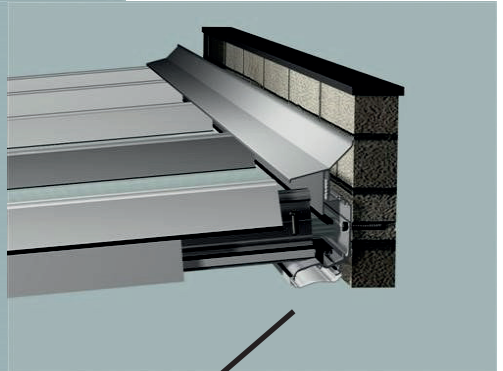
(Suitable for 16mm, 25mm and 35mm Glazing Options)

POLYCARBONATE SHEET AND GLAZING BARS

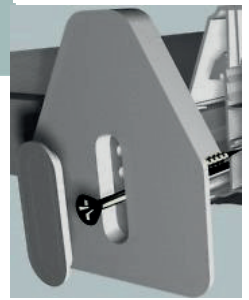
**Glazing Bar**



**Wallplate**



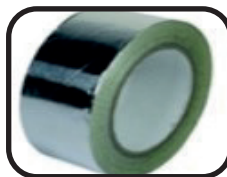
**Eavesbeam**



**End Cap**



**SHEET CLOSURES**



**SEALING TAPE**



**FOILBAND 100/150/200 mm**



020 8665 1221



[sales@carltonplastics.co.uk](mailto:sales@carltonplastics.co.uk)

# Timber Supported Bars



(Suitable for 10mm, 16mm and 25mm Glazing Options)

## Snap Down and Screw Down Glazing Bars



BREATHER TAPE



WE DELIVER



FIXING PINS

# Self-Supporting Glazing System

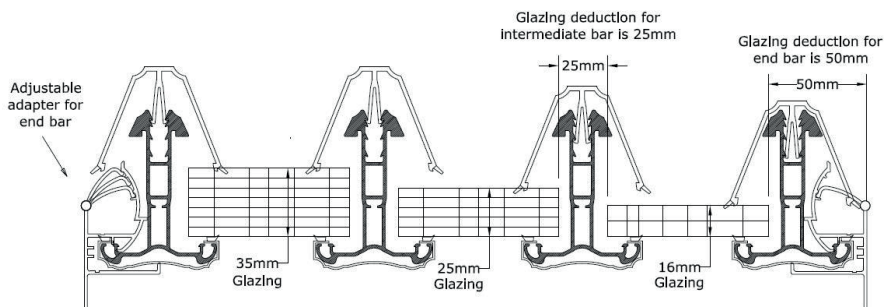
(Suitable for 16mm, 25mm and 35mm Glazing Options)

A self-supporting roofing system that takes all glazing options from 16mm to 35mm.

With an exceptional weight to strength ratio the Heavy Duty Glazing Bar can span up to 4m unsupported without the use of additional purlins.

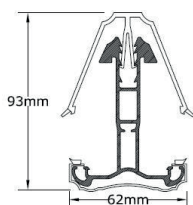
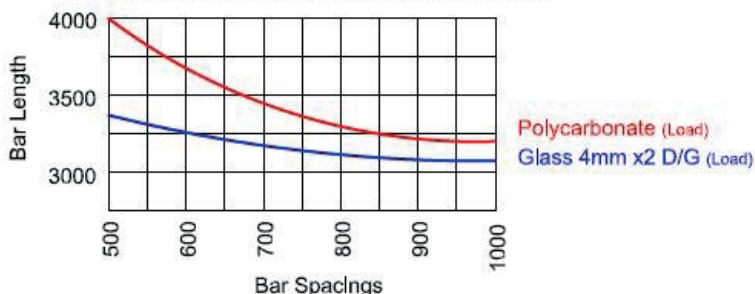
The lighter weight Economy Glazing Bar is ideal for smaller applications.

Heavy Duty Glazing Bar.



## BAR SNOW LOADING

Deflection is calculated with a uniform load of 60Kg/m<sup>2</sup>



Available in 3m, 3.5m, 4m and 6m lengths in white from stock. Contact us for availability of bars in a range of colours and woodgrain effect foils, please note these products will have an increased lead time. We can also have bars colour bonded to any RAL number (see page 50)



020 8665 1221



[sales@carltonplastics.co.uk](mailto:sales@carltonplastics.co.uk)

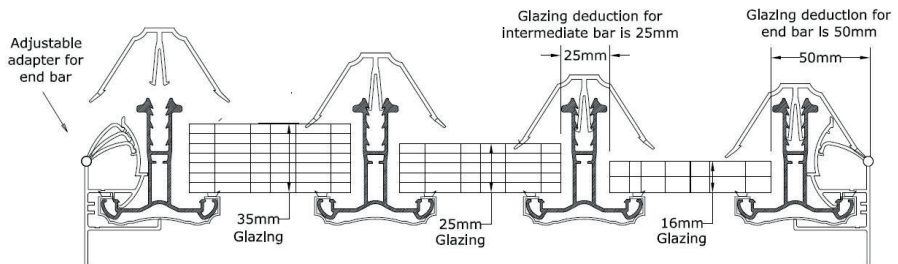
Fix self-support bars to wallplate and eavesbeam at correct centres using self-drill screws. Identify intermediate and edge bars if applicable.

Lay taped polycarbonate sheets into bars. Gently tap wallplate top caps down onto sheets. Gently tap glazing bar top cap down onto sections to correct positions. Top caps should project 5mm from end of the beam sections at gutter position.

Attach sheet closures to end of polycarbonate sheets.

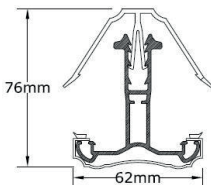
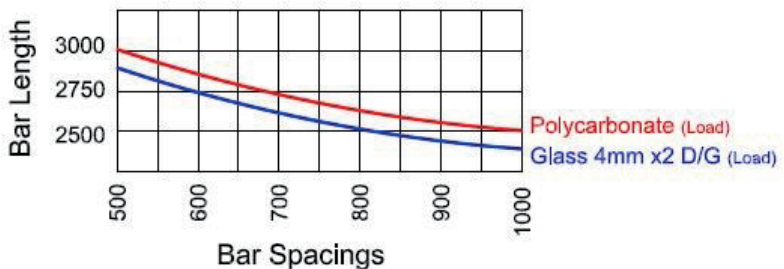
Fix end caps to bars, eavesbeam and wallplate with screws provided.

### Economy Glazing Bar.



### BAR SNOW LOADING

Deflection is calculated with a uniform load of 60Kg/m<sup>2</sup>



Available in 2m, 2.5m and 3m lengths in white from stock. Contact us for availability of bars in a range of colours and woodgrain effect foils, please note these products will have an increased lead time. We can also have bars colour bonded to any RAL number (see page 48)

# Ultraframe - Ultrasky Roof Lights

Installed on a new build extension, Orangery, or inserted into an existing flat roof, an Ultrasky roof light will help you add the feeling of space and natural light to your home.



Get the “wow” factor by choosing aluminium anthracite grey or satin black colour options to match with the latest bi-fold doors or white PVCu to match with modern window frames. Internally, the lantern roof can be clad in white PVCu or upgraded to anthracite grey or satin black to either match or contrast with your chosen external finish.

The UltraSky lantern is available in a wide range of rectangular sizes from 1m x 1.5m up to 4m x 6m.



**ultraSky**  
by ultraframe



020 8665 1221



[sales@carltonplastics.co.uk](mailto:sales@carltonplastics.co.uk)

Flood the light into your home with an Ultrasky lantern.



Whether your new living space is for a dining room, kitchen, living room, bedroom or bathroom the Ultrasky lantern is the perfect elegant solution for your home. The Ultrasky lantern will enhance any home, traditional or modern alike. It's strong ridge reduces the need for multiple bars to maximise the amount of glass that allows light to flood into your room.

Highly efficient thermal glazing options will help reduce heat loss and noise pollution.

Roof vents available with both manual and automatic options.



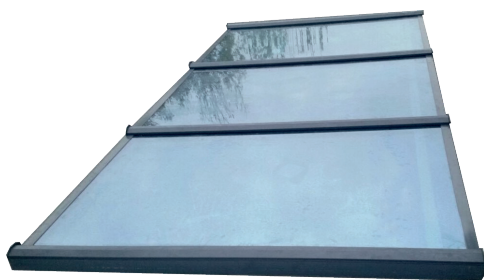
# Maxi Roof Lights

A range of aluminium skylights and roof lanterns that are slimline, strong and fast to install. Fitted with thermally efficient argon filled glass units and self-cleaning glass as standard these stylish roof lights are available in a choice of designs.



**MAXI-flat:** available in both double and triple glazed options. No visible bars on show internally. Maximum size is 1.2m x 2.5m

Unique glass lock system means that once the frame is clicked into place the glass can no longer be removed from the frame making it one of the most secure lanterns available.



**MAXI-sky** roofs are designed for large spanning openings. Able to span 3m using a flush profile self supporting beam system. A transom width of just 60mm means less bars and more light.

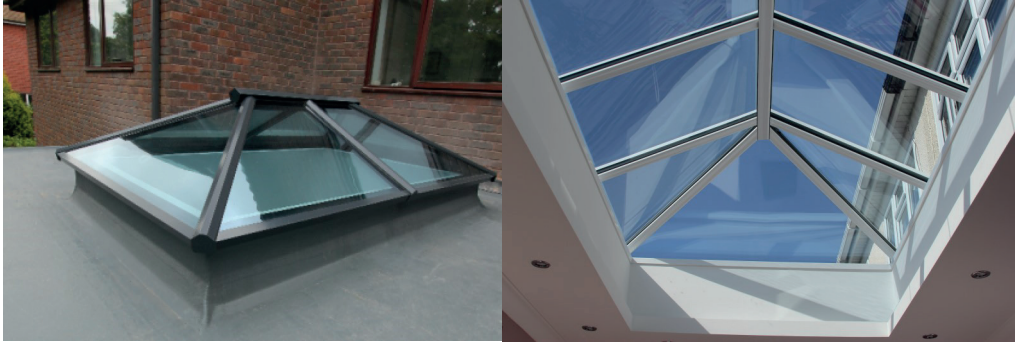
Available in both double and triple glazed options. Maximum size is 3m projection x any length.



020 8665 1221



[sales@carltonplastics.co.uk](mailto:sales@carltonplastics.co.uk)



**MAXI-hipped:** with a ridge width of just 60mm, no bulky radius ends and eliminating the need for jack rafter supports, the Maxi-hipped roof system is one of the slimmest roof lanterns on the market today with powder coated aluminium caps externally. Available in both double and triple glazed options. Maximum size is 3m wide x any length.



**MAXI-pyramid** roofs are designed to fit onto square roof openings. With no need for a ridge beam, and sloping on all sides, the MAXI-pyramid gives the maximum possible glass area with the minimum obstruction.

Available in both double and triple glazed options. Maximum size is 2.5m x 2.5m.

The range also includes the **MAXI-walk-on** flat lantern and the **MAXI-opener** offering a fully automatic opening flat roof with rain sensor, temperature control and remote control.

# Wendland Roof Kits

## Design your perfect conservatory.

A conservatory can maximise the daylight in your home and create a stunning space to enjoy. With Wendland any size, shape or style is possible. Modern glazing improves thermal efficiency, reducing heating costs and ensuring you can enjoy your space all year round.

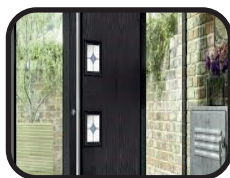
### Wendland Glass Roof



Visit our web site and download the extensive installation document



LAMINATED WINDOW  
BOARDS



COMPOSITE DOORS



ROOF DOMES



020 8665 1221



[sales@carltonplastics.co.uk](mailto:sales@carltonplastics.co.uk)



Whether you want to add your new Classic roof to a conservatory, orangery or house extension, you'll be able to achieve your design aims with this system, which uses the latest roof and glazing technology to deliver results that are both aesthetically and practically outstanding.



When added to a conservatory, the design of the Classic roof can be complemented by adding toughened or performance glass. Creating stunning external sightlines will also be possible when you add a decorative cornice to the outside of your new room, which will hide the guttering.



Build a traditional-looking orangery easily by using the Classic roof in tandem with a plastered pelmet, pier and dwarf wall.

**Classic**roof<sup>TM</sup>  
By Ultraframe

# LivinRoof System

## SOLID ROOF SYSTEMS

Create a comfortable room that is light, bright and suitable all year round. LivinRoof is a hybrid conservatory roof offering all the benefits of a warm roof whilst offering customisable glass panel options exactly where you want them.



The glass panels can be inserted to replace any of the grey roofing panels, and in any shape – enabling you to maximise the light in your room to produce a contemporary design not easily achievable with other conservatory roofs. Your newly-installed LivinRoof will truly transform your interior space.

Inside, the LivinRoof is stunning. It can deliver a magnificent vaulted ceiling and incorporates an internal pelmet around its perimeter, into which lights can be installed. At the ridge of the LivinRoof, you can insert or hang lights in places you otherwise wouldn't be able to on a vaulted or suspended ceiling.



**LivinROOF**  
by ultraframe

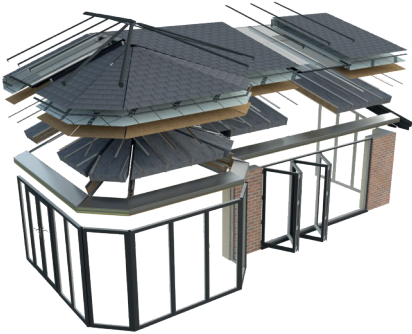


020 8665 1221



[sales@carltonplastics.co.uk](mailto:sales@carltonplastics.co.uk)

Replacement tiled roof that can incorporate full rectangular glass panels.



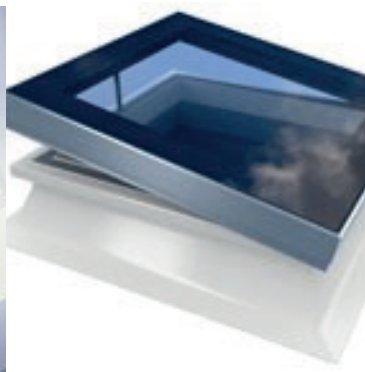
UltraRoof380 is a cost effective, simple to fit pre-packaged solid roof kit that is perfect for the replacement of tired conservatory roofs. UltraRoof380 substantially overcomes, for the consumer, the twin issues of the conservatory being too hot in summer and too cold in winter. Moreover, it results in a beautiful vaulted plastered ceiling inside with a stepped detail at the eaves creating the perfect place for cables and spotlights.

For those consumers who still want an element of light through their new solid roof, the clever configurable technology allows the fitment of multiple glass panels, this can be a major consideration to protect light into the adjacent room.

**380**  
**ultraRoof**  
engineered by **ultraframe**

# Roof Domes

## ROOF VENTS AND DOMES



Mardome rooflights are designed specifically for installation on flat and low pitched or curved roof structures where the roof pitch does not exceed 15 degrees.

Ideal for both new build and refurbishment projects, the extensive product range will satisfy every specification requirement and budget on projects from schools and hospitals to leisure centres, commercial buildings and residential properties.

Designed to be compatible with a range of roofing systems including single ply, bituminous, metal, liquid applied and asphalt.

Available with a range of kerb and fixing options ensuring a suitable dome for every flat roof application.



020 8665 1221



[sales@carltonplastics.co.uk](mailto:sales@carltonplastics.co.uk)

## marvent Lp

Designed for simple and effective installation



- ◆ Slim, unobtrusive frame, minimising visual impact from inside the conservatory.
- ◆ Available glazed with glass or with 25mm, 32mm or 35mm polycarbonate.
- ◆ Glazing unit opens to 90 degrees.
- ◆ Manual or electric opening.
- ◆ Rain sensor, heat sensor and remote control options available.

# Conservatory Styles



## Victorian

The traditional design includes a three or five facet bay that projects out giving an attractive curved outline and excellent outside views. The beautiful finials that line the roof add a lavish finishing touch.



## Lean-To

Popular and cost-effective, lean-to conservatories are ideal if you have limited space. They are also perfect for bungalows where there can be height restrictions.



## Edwardian

Edwardian conservatories are a striking addition to your home. Their square design makes the most of available space and allows for sunlight to flood inside.



020 8665 1221



[sales@carltonplastics.co.uk](mailto:sales@carltonplastics.co.uk)

## Gable-Ended

The high-angled roof maximises sunlight creating a warm and airy atmosphere inside. The gable-end often incorporates a “rising-sun” design, a stylish and charming feature.



## Bespoke

Combining the lean-to conservatory with one of the other styles to create a P-shaped structure, these conservatories can be perfect if you have an unconventional building space.



## Orangery

Offering more privacy than other conservatories, an orangery is a truly luxurious way to extend your home. An orangery will provide you with a beautiful new living space.



# Canopy and carport systems

## Choice of canopies & carports.

16mm clear polycarbonate

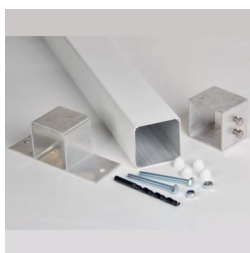
White self-supporting glazing bars

Gutter and support legs included

Optional post pads available

Available in a choice of widths of 2m, 3m, 4m, 5m, and 6m.

Each width can be supplied in 3 different projections 2m, 3m and 4m..



Support legs available in white and in both 2.5m and 3.5m lengths.

Optional pad protectors are 81mm x 81mm in size and come in a range of colours as seen below. Ideal for use in school playgrounds and nurseries.



020 8665 1221

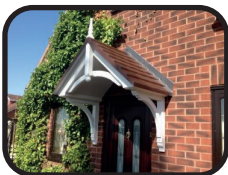


[sales@carltonplastics.co.uk](mailto:sales@carltonplastics.co.uk)

Tassat canopy is also available in widths of 2m, 3m, 4m, 5m and 6m. Projections come in 3 standard sizes 2m, 3m, and 4m.

Frames are available in white, grey and brown.

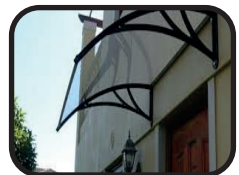
Can be glazed in either clear, bronze or opal polycarbonate or clear glass.



GRP DOOR CANOPIES



COMPOSITE DOORS



DOOR CANOPIES

# Maxi-Lite Canopy System

## Traditional



Enhance the look of your garden veranda with additional traditional features such as Victorian style support posts and ornate brackets.

Frames can be colour matched to your existing windows and doors and are also available in wood effect foil finishes.

A range of side screens can also be added for increased privacy.



020 8665 1221



[sales@carltonplastics.co.uk](mailto:sales@carltonplastics.co.uk)

## Contemporary



Clean smart garden verandas with a contemporary look. The 72mm support posts can facilitate projections up to 4m and are available in a choice of colours. Black, White, Anthracite Grey and Chartwell Green. They are also available in three woodgrain effect foil finishes. Rosewood, Golden Oak and Irish Oak.

## Carports



Carports or covered walkways can be created using the polycarbonate range of canopies. Available in 16mm, 25mm or 35mm polycarbonate with a choice of three tints. Frames are available in a choice of seven colours.

# Canopies - Polycarbonate / Acrylic

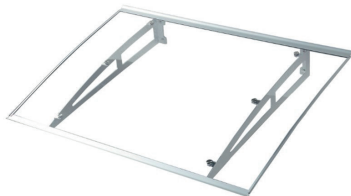
## CANOPIES



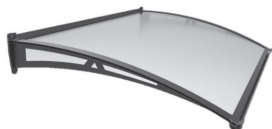
1500 wide x 1200 projection.



1000 wide x 700 projection.



1400 wide x 1000 projection.



1500 wide x 1000 projection.

We can provide a range of canopies to suit every application.

- ◆ Over Door
- ◆ Over Window
- ◆ Bicycle Parking
- ◆ Air Vents
- ◆ Smoking Areas

Available in widths from 1000mm and projections up to 1200mm.

Strong, durable and easy to assemble these canopies are available in a variety of contemporary designs.

Some designs can be linked together to offer coverage for greater widths.



020 8665 1221



[sales@carltonplastics.co.uk](mailto:sales@carltonplastics.co.uk)

# Canopies - GRP



GRP door canopies available in a variety of widths and projections and also as bespoke sizes.

A choice of Gallows brackets and canopy legs are also available.



# Clever Click Flooring

## FLOORING

### **CLEVERCLICK** Luxury Vinyl Flooring

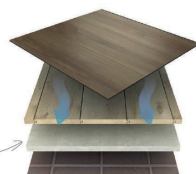
Revolutionary, quick and easy flooring with the natural beauty of wood and stone

#### What is Clever Click?

Available in a range of both Wood and Stone designs, Clever Click is a revolutionary, easy-to-install technology which halves installation time compared to traditional vinyl floor installation.

Clever Click technology removes the need for adhesive and timely room preparation, meaning your new floor can be installed in no time.

Designed to work over existing flooring substrates including floorboards, concrete and tiles

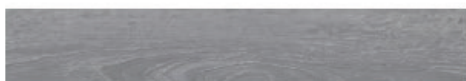


#### Designer Floors: Wood Selection

Thickness: 4.2mm. Wear layer: PU 0.30mm.  
Coverage: 2m<sup>2</sup> per pack.



**Richmond Oak**  
191mm x 1316mm



**Cleveland Oak**  
191mm x 1316mm



**Amarillo Oak**  
191mm x 1316mm



**Fontana Oak**  
191mm x 1316mm



**Huntsville Oak**  
191mm x 1316mm



**Norfolk Walnut**  
191mm x 1316mm

#### Designer Floors:

Thickness: 4.2mm. Wear layer: PU 0.30mm.  
Coverage: 2m<sup>2</sup> per box.



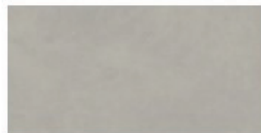
**Pasadena**  
300.6mm x 604.6mm



**Frisco Stone**  
300.6mm x 604.6mm



**Burbank**  
300.6mm x 604.6mm



**Pomena Stone**  
300.6mm x 604.6mm



020 8665 1221



[sales@carltonplastics.co.uk](mailto:sales@carltonplastics.co.uk)

## CLEVER CLICK PLUS



**White Wash Pine**  
**24126**  
191mm x 1316mm



**Smoked Oak**  
**24935**  
191mm x 1316mm



**Marsh Wood**  
**22852**  
191mm x 1316mm



**Bear Oak**  
**24823**  
191mm x 1316mm



**Barn Oak**  
**28890**  
191mm x 1316mm



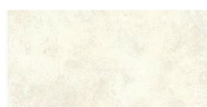
**Chapman Oak**  
**24876**  
191mm x 1316mm



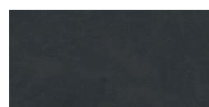
**Dorato Stone 40862**  
324mm x 655mm



**Olympia 36223**  
324mm x 655mm



**Clint Cement Ice 46127**  
324mm x 655mm



**Clint Cement Nero 46991**  
324mm x 655mm



**Venetian Stone Ice 46111**  
324mm x 655mm



**Venetian Stone Grey 46931**  
324mm x 655mm



**Ocean Slate 36970**  
324mm x 655mm

Also available in Dryback  
329mm x 659mm



Scuff & Stain Resistant



Clever Click Plus  
Residential  
Guarantee



Clever Click Plus  
Commercial  
Guarantee



Clever Click  
Residential  
Guarantee



Clever Click  
Commercial  
Guarantee



Water  
Resistant



Natural Look  
& Feel



No Glue  
Required



Patented  
Technology



Quick & Easy  
Installation



Easy to Clean  
and Maintain



Warm & Quiet  
Under Foot



Superguard  
Protected



Suitable for  
all Rooms



No  
Delamination



Slip  
Resistant



Eco-friendly  
Solution



Made  
in the EU

# PVC Panels

## INTERNAL CLADDING

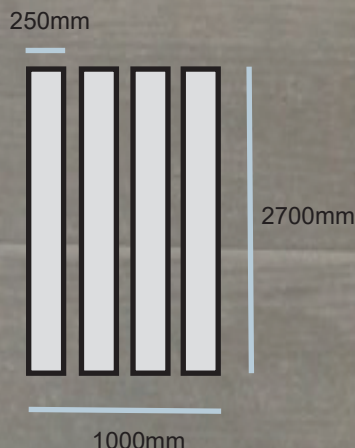
Decorative PVC wall and ceiling panels have become increasingly popular for all rooms of the house. Traditionally used in bathroom and shower areas the range of styles and designs, including 3-D effect patterns, now means they are increasingly being used throughout homes and commercial buildings.

- ◆ Easy to install.
- ◆ On average 50% faster and cheaper to install than traditional tiles.
- ◆ Modern and contemporary styles available..
- ◆ Interlocking boards providing both flat/flush and flat/close V finish.
- ◆ Easy to Clean.
- ◆ Panels available in sizes up to 1000mm..
- ◆ Available with a full range of fittings and trims.
- ◆ Boards come in a range of colours and effects and are sold in a choice of widths and thicknesses.
- ◆ Can be installed with little preparation and even installed over existing tiles.

Shower panels are 10mm thick and are available as single panel packs 1000mm wide by 2400mm.



5mm thick boards are available in packs of 4 panels. 250mm wide by 2700mm.

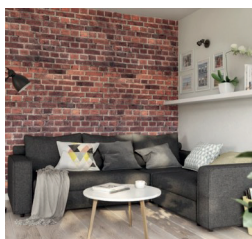
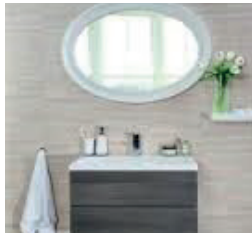


020 8665 1221



[sales@carltonplastics.co.uk](mailto:sales@carltonplastics.co.uk)

A cost-effective alternative to traditional tiles.  
Perfect for both domestic and commercial applications.



Installation Guides Available

# 3D Effect Panels

## INTERNAL CLADDING



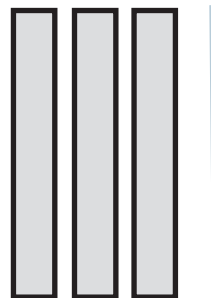
Create 3D Brick effect walls in a choice of styles.

Popular in both commercial and domestic applications.

Each pack contains

3 pattern matched panels.

400mm



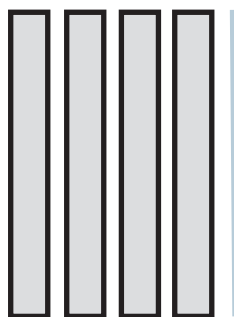
2400mm

1200mm

Each pack contains

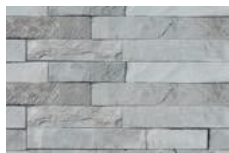
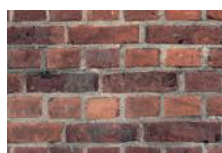
4 pattern matched panels.

250mm



2650mm

1000mm



020 8665 1221



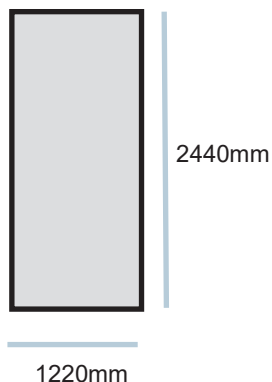
[sales@carltonplastics.co.uk](mailto:sales@carltonplastics.co.uk)



These solid laminated, bevel embossed tile effect waterproof panels are 3mm thick and their crisp, clean integral grout lines provide a modern facelift to any wet room, shower, kitchen or bathroom.

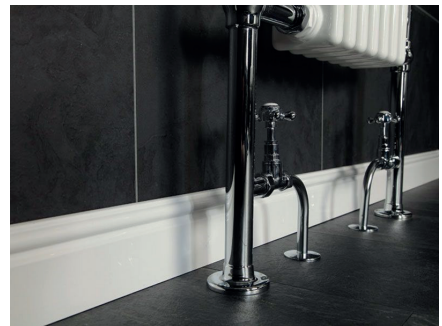
Available in either high gloss black or high gloss white finish they are available as single panels measuring 2440mm x 1220mm.

Although suitable for use as a splashback these panels are not to be installed in contact with direct heat source.



# Bathroom Panels

## INTERNAL CLADDING



Visit our Trade Counter to see the full range of styles and colours for bathroom & shower panels



020 8665 1221



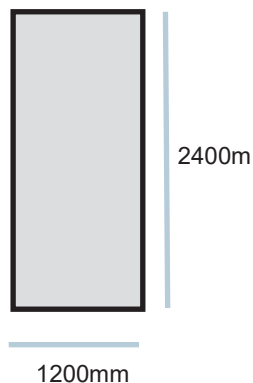
[sales@carltonplastics.co.uk](mailto:sales@carltonplastics.co.uk)

# 4mm Solid PVC panels



A strong modern alternative to kitchen splashbacks and shower or wet room walls.

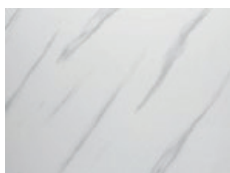
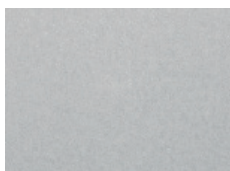
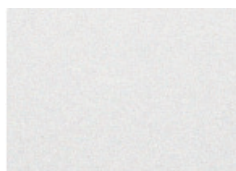
Made of 4mm solid PVC and available in panels 2400mm x 1200mm these panels offer the versatility to complete any installation in both commercial and domestic settings.



Panels can be butted together for a smooth closed finish or use in-line joint strip to create a classic chrome joint.

Each pack contains 1 Panel 2400mm x 1200mm.

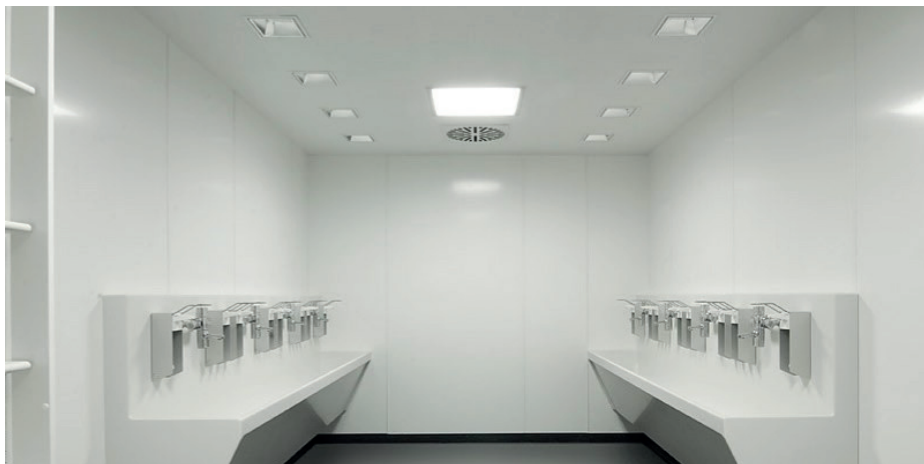
Although suitable for use as a splashback these panels are not to be installed in contact with direct heat source.



# White Gloss/Matt Sheets

## INTERNAL CLADDING

- ◆ A foamed PVC sheet with either a gloss or matt finish.
- ◆ Suitable for both commercial and domestic use.
- ◆ Perfect for food and hygiene areas, clinics and hospitals, schools, commercial kitchens or anywhere requiring frequently cleaned cladding.
- ◆ Class 1 fire rating.
- ◆ Available in 3mm and 5mm thickness.
- ◆ Panel size 2440mm x 1220mm.
- ◆ Cost effective.
- ◆ Range of trims available.

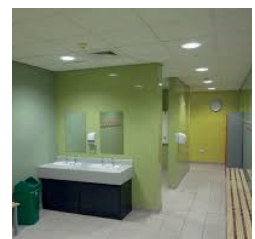
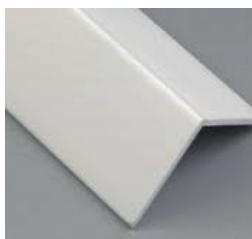
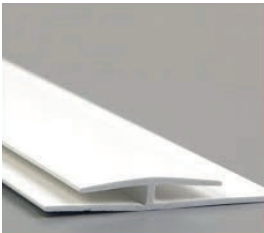


020 8665 1221



[sales@carltonplastics.co.uk](mailto:sales@carltonplastics.co.uk)

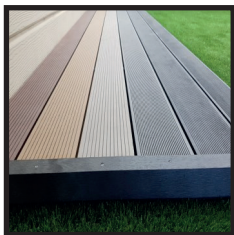
## Suitable for both Walls and Ceilings



Coloured PVC gloss sheets are now available in a range of colours. Ideal for in-store displays or for making an impact at exhibitions. Easily fabricated with a good surface for screen printing. High gloss coloured sheets and trims are also available. Perfect for schools and nurseries.

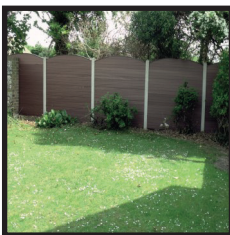
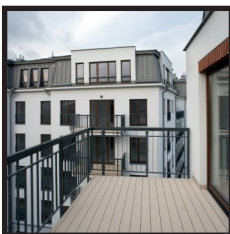
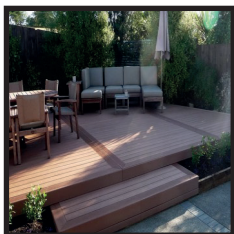
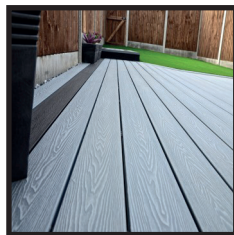
# Landscape Solutions

## LANDSCAPE SOLUTIONS



### Composite Decking

3 decking options,  
each with a choice of  
colours.

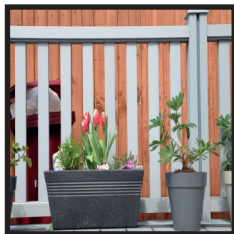
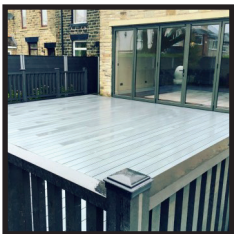
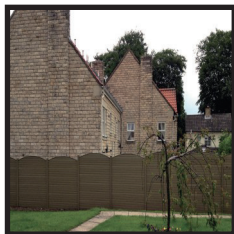


### Composite Fencing

Easy to install and  
Low maintenance.

### Balustrades & Railings

Compliment your  
decking installation.



020 8665 1221



[sales@carltonplastics.co.uk](mailto:sales@carltonplastics.co.uk)

## Composite Decking

The growth in popularity of composite decking has led to an increased choice in the range and styles available.

As an independent we can access 3 different manufacturer's decking to provide choice in terms of styles, lengths and budget.

Made of a wood and PVCu composite these boards offer strength and durability together with the natural look of wood without the ongoing timely and costly maintenance of timber decking.

The double sided boards offer the choice of two non-slip surface finishes.

Insect and water resistant, these boards are virtually maintenance free. No rotting, no splinters and no more dangerously slippery decking boards. It's easy to see why more and more people are installing composite decking for both residential and commercial projects.

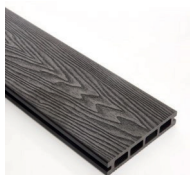


Choice of 5 Colours.  
These double sided boards give you the choice of  
grooved or woodgrain effect.

**BROWN**



**BLACK**



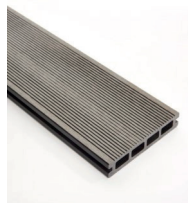
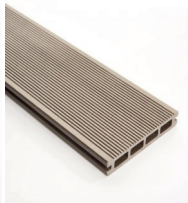
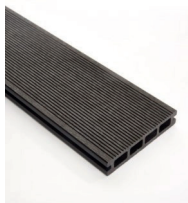
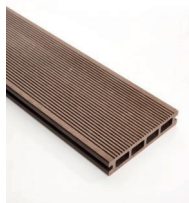
**NATURAL**



**TEAK**

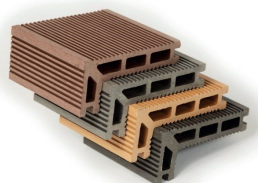


**GREY**



## Features

- Decking planks are 148mm x 24mm and are available in 3.0m and 5.0m lengths.
- Step board available in 3.0m length with 50mm nose.
- Angle trim and matching accessories available.
- Choice of 5 colour and 2 design options
- Easy to install
- Unique removable clip system for easy access
- Manufactured using eco-friendly materials.





## **Starter Clips.**

Used for initial board available in packs of 20.



**Concealed clips.** These clips provide a uniform 8mm gap between boards without the need to screw directly through boards.

They allow for easy removal of boards should access under the deck be required. Available in packs of 100.



## **Angle Trim.**

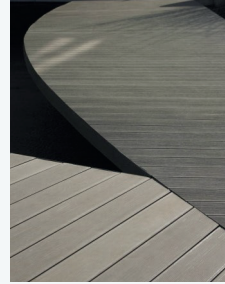
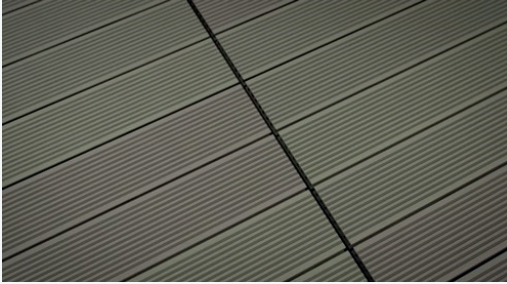
Available in both 3m and 5m lengths.



## **PVC sub-base.**

# Twinson Composite Decking

LANDSCAPE SOLUTIONS



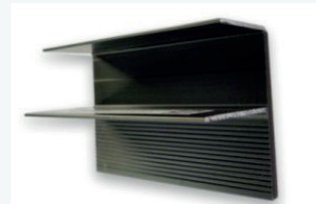
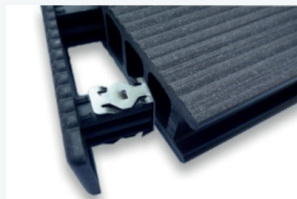
Twinson composite decking is easy to install, requires minimal maintenance and is available in a range of 8 colours. Its double-sided planks offer a choice of two 'non-slip' surface finishes and its hardwearing structure makes it a robust decking solution that can be used and enjoyed for many years.

Boards are 140mm x 28mm and are available in two lengths 4m and 6m.

Finishing trims are available in a choice of end caps, plinth boards and anodised F and L sections to compliment your installation.

A range of fixtures are available to suit both floating and fixed substructures.

The choice of substructures means these boards are a popular choice for balconies and roof top installations.



020 8665 1221

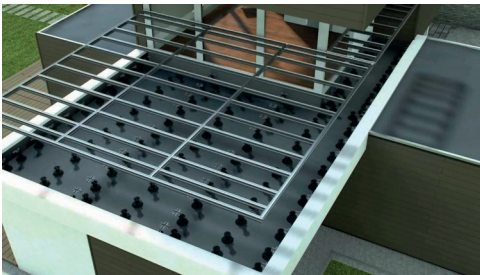


[sales@carltonplastics.co.uk](mailto:sales@carltonplastics.co.uk)



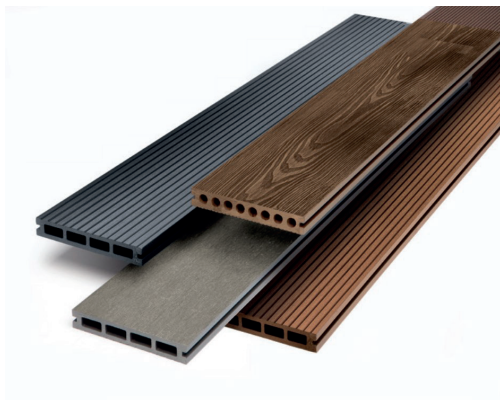
A range of both structural and non-structural profiles are available to offer a solution to most situations where a traditional substructure may not be suitable.

Associated clips are available to suit each substructure together with a range of adjustable pedestals and spacers.



# Duradek Composite Decking

High-performance, durable, fade and slip resistant alternative to traditional timber decking.



Available in two distinct styles.

**Dueto:** two-tone double-sided hollow boards offering a woodgrain finish or a narrow ribbed finish. Available in grey and brown. 3.6m lengths are 150mm x 23mm.

**Estander:** hollow boards offer a ribbed finish or a sanded finish available in charcoal, grey and brown. 3.6m lengths are 146mm x 22mm.

- Does not rot
- Quick and easy to install
- Durable & slip resistant
- Low maintenance
- Hidden fixings
- Environmentally friendly
- Choice of flat "sanded", grooved or woodgrain effect finishes.



Water  
Resistant



Natural Look  
& Feel



Quick & Easy  
Installation



Slip  
Resistant



Easy to Clean  
and Maintain



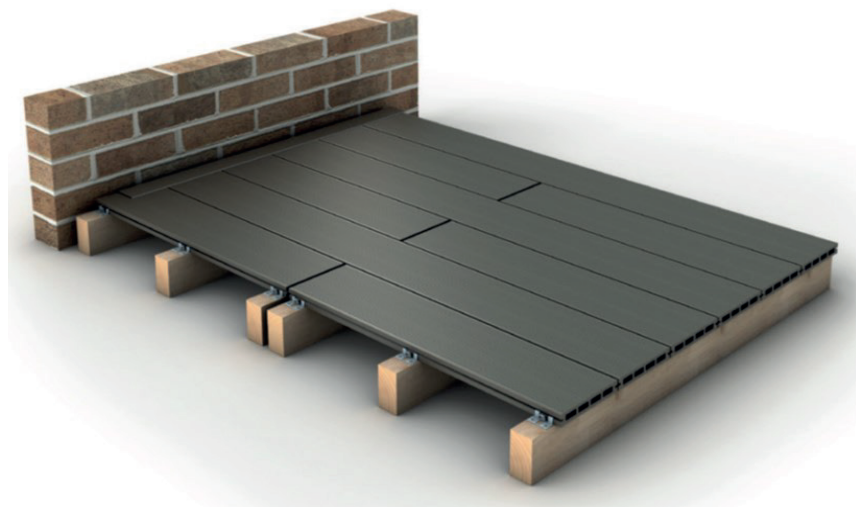
Eco-friendly  
Solution



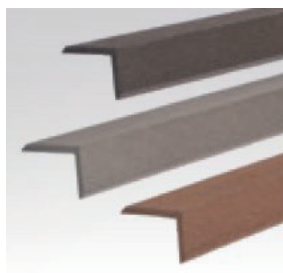
020 8665 1221



[sales@carltonplastics.co.uk](mailto:sales@carltonplastics.co.uk)

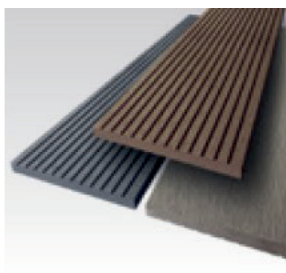


Installation guide available.



Edging trims

40mm x 40mm



Fascia trims

130mm x 10mm x 3.6m



Subframe

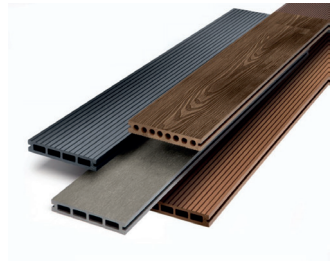
40mm x 30mm x 3.6m

# Balustrades

## LANDSCAPE SOLUTIONS



- Does not rot,
- Weather resistant and easy to clean.
- Quick and easy to install.
- Split and splinter free.
- Low maintenance.
- Hidden fixings.
- Environmentally friendly.
- Flat “sanded” effect finish available in either Charcoal or brown.



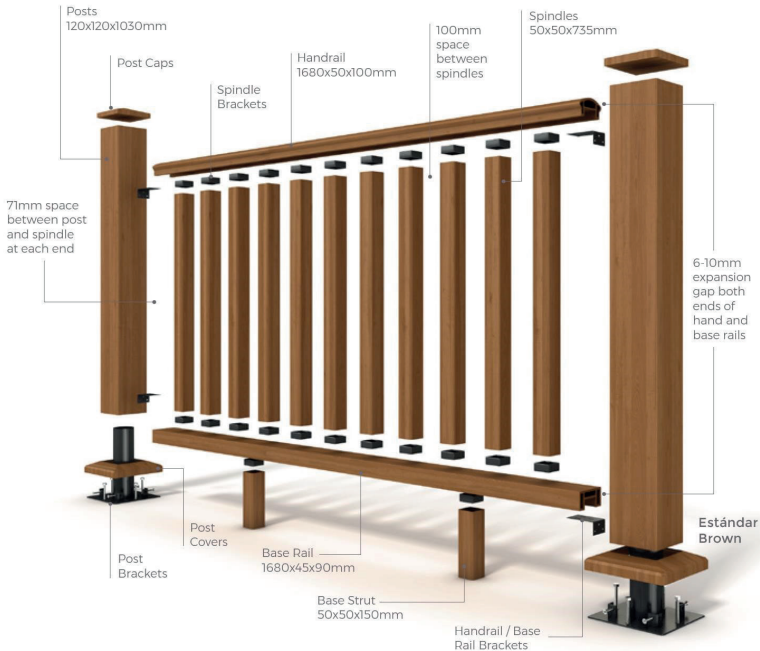
Match or contrast with your choice of DuraDek decking or one of the other composite wood decking options.



020 8665 1221



[sales@carltonplastics.co.uk](mailto:sales@carltonplastics.co.uk)



## Installation

- ◆ Fit the post brackets to the sub-base (concrete or joists).
- ◆ Fit the posts to the post brackets, leaving a 6-10mm gap for expansion around the post.
- ◆ Fit the post covers.
- ◆ Fit 4 L-shaped brackets and position 2 struts equally spaced along base rail (L-shaped brackets are fitted with the long angle fixed to the rails).
- ◆ Fit the base rail with 2 spindle mounts in position below the rail to accommodate the base struts.
- ◆ Fit 11 equally spaced spindle base rail mounts to the base rail.
- ◆ Fit the top hand rail with 11 corresponding equally spaced rail mounts then pit to the posts.
- ◆ When fitting both the hand and base rails, ensure a 6mm expansion gap between the rail ends and the posts.
- ◆ Finally, fit the post caps.



# Composite Garden Fencing

## Composite Fencing

Our range of Composite Fencing provides the solution to timely and costly maintenance of timber fencing.

- Available in a choice of 3 colours.
- Virtually maintenance free and with a manufacturer guarantee against rotting for 20 years.
- Can be used with existing concrete posts or matching composite posts.
- Incredibly light and strong, for ease of handling and transportation, whilst providing a greater tensile strength than concrete posts as it will flex in strong winds.
- Can be cut with a handsaw and accepts screws to secure into position.



**Before**



**After**



Available in 3 colours. Each panel is 300mm high and comes in a choice of 2 lengths.



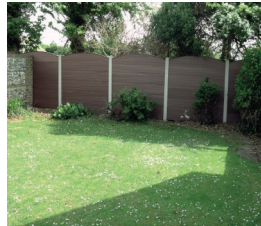
**WALNUT**



**NATURAL**



**GRAPHITE**



Can be used with matching composite posts or with existing concrete posts.

Easy to cut and trim to size.



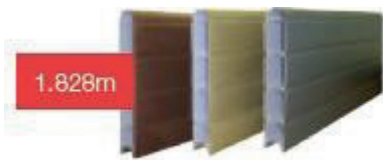
Made from 75% recycled materials.



Strong and yet, at around 5kg per length, light which makes handling and transportation easy.

# Composite Fencing

## LANDSCAPE SOLUTIONS



1.8m Post

1800 x 110 x 90



2.4m Post

2400 x 110 x 90



2.7m Post

2700 x 110 x 90

2400mm and 2700mm posts have steel inserts. Allow an extra 600mm if digging posts into ground.



Decorative fence post caps.

See installation instructions on page 172.



020 8665 1221



[sales@carltonplastics.co.uk](mailto:sales@carltonplastics.co.uk)

Utility Strip



Anti-theft clips.

Drive in and bolt-down fence spikes.



# Installation Introduction

**We hope you'll find the following installation guides helpful. Many installation videos are available on our website [carltonplastics.co.uk](http://carltonplastics.co.uk)**

Before you start any of the projects shown here please consider the following Important Information.

**Access:** Never attempt to enter the work area with an unsupported ladder or without a stable deck. Always use a full scaffold platform or a purpose made cantilevered deck system with guard rails .

**COSHH:** Full COSHH Sheets available on request.

**Storage & Handling:** Load and unload by hand and support both ends of a 5m length.

**Cutting and Shaping:** Use conventional carpentry tools including fine toothed saws. Power tools may be run at speeds appropriate for timber. Nail and screw holes do not require pre-drilling.

**Fixings:**

16mm or 20mm Fascia : 2 x 65mm Nails at 600mm centres for white and 400mm centres for foiled boards.

9mm Cover boards: 2 x 40mm at 600mm centres for white and 400mm for foiled boards.

Flat Boards: 2 x 40mm Pins at 600mm centres for white and 400mm centres for foiled boards.

**Expansion Gaps:** Always leave a minimum 4mm expansion gap at the end of each board ie where two boards meet leave 8mm overall.

**Sealants:** Use a low modulus silicone. Use a primer when bonding to GRP, stainless steel, aluminium or untreated wood. Do not use with polycarbonate sheet.

**Ventilation: IMPORTANT** - Roof voids must be ventilated in order to stop warm air condensing on cold surfaces. Condensation encourages rot and mould growth.



## Linear to metric conversion

1 Yard = 3 Feet

1 Foot (') = 12 inches

1 inch (") = 25.4mm

Eg to convert 8' 9" into mm

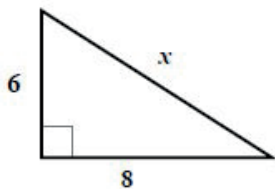
$8 \times 12 = 96 + 9 = 105$

$\times 25.4 = 2667\text{mm}$

## Approximate conversion for popular board sizes

Inch	mm	Inch	mm
1	25	8	200
2	50	9	225
3	75	10	250
4	100	12	300
5	125	16	400
6	150	18	450
7	175	24	600

To calculate length of the pitch.



$$6^2 + 8^2 = x^2$$

$$36 + 64 = x^2$$

$$100 = x^2$$

$$\sqrt{100} = \sqrt{x^2}$$

$$x = 10$$

## CLADDING CALCULATOR

To Calculate the number of lengths required

divide the square meterage by

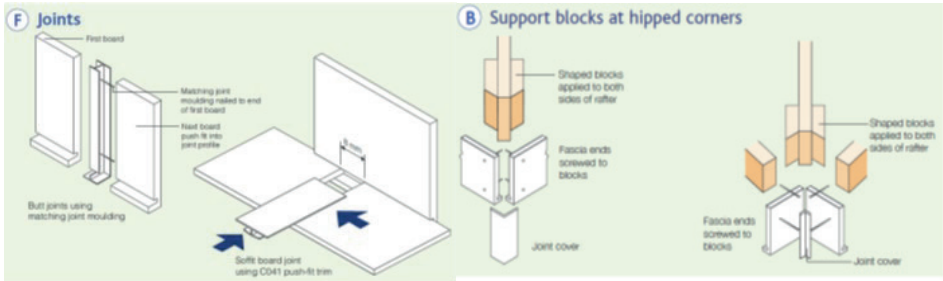
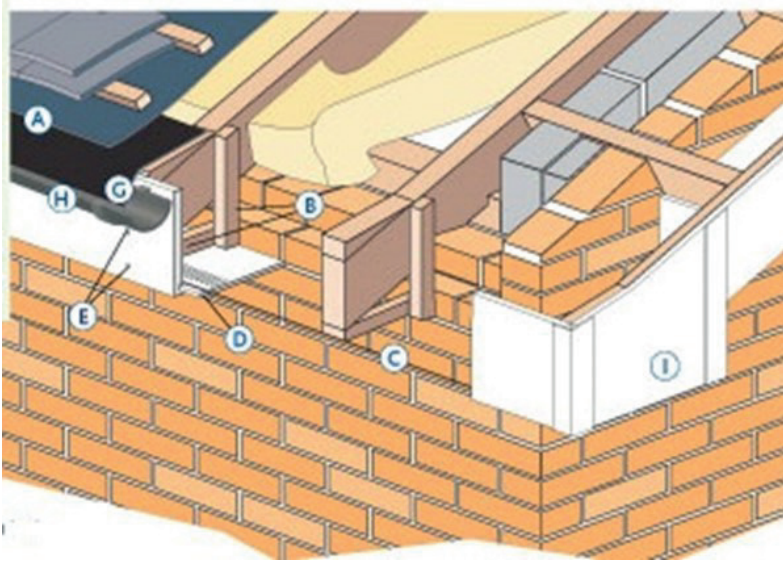
0.5 (100mm Cladding)

0.75 (150mm Cladding)

This will give an exact number of lengths  
- not allowing for wastage

# Full Replacement Installation

## INSTALLATION



OVER FASCIA PROTECTOR



CORNERS & JOINTS



FASCIA BOARDS



020 8665 1221



[sales@carltonplastics.co.uk](mailto:sales@carltonplastics.co.uk)

## **Sequence of Work**

- A. Cut back rotted felt to a clean edge.
- B. Fit suitable timber hangers (preservative treated) to support soffit boards. Screw hangers to rafter side checking for level. Deep soffits must be nailed up every 200mm max across their depth. Set up support for hipped corners.
- C. Set up string lines to check both vertical and horizontal faces of rafter feet and hangers are straight and level.
- D. Nail soffit board to hanger. Inner edge of soffit abuts to wall or sits on bricks. Outer edge of soffit should overhang by 10mm to fit groove in back of fascia board.
- E. Nail fascia board to rafter feet with sufficient height to create tile kick.
- F. Make soffit and fascia joints between rafters.
- G. Fit a dpc material under existing felt ensuring new material dressed into gutter.
- H. Fit gutter brackets directly to replacement fascia of 16mm and above in accordance with manufacturer's recommendations. Ensure correct fall in the gutter towards the down pipe.
- I. Box End construction—see next page.

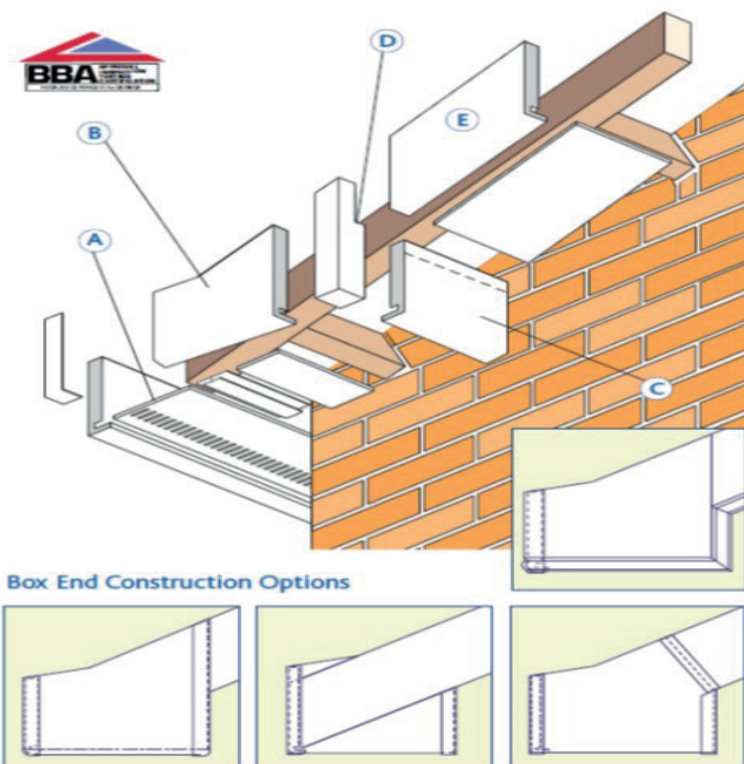
## **Notes for Over - Capping**

- 1. Check the expansion gaps and fixing centres as detailed on page 56. All over-capped timber must be sound.
- 2. The existing timber fascia must support the weight of tiles and guttering.

Installation Videos available at [carltonplastics.co.uk](http://carltonplastics.co.uk)

# Box End Construction & Installation

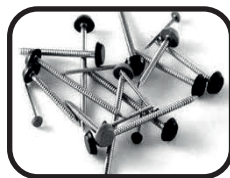
## INSTALLATION



BOX END



FASCIA ACCESSORIES



PLASTIC PINS



020 8665 1221



[sales@carltonplastics.co.uk](mailto:sales@carltonplastics.co.uk)

## Sequence of Work

- A. Finish fascia level with the face of the rafter gable. Soffit should overhang by 10mm and may be cut square or mitred.

Note: Timber hangers should be installed as required to locate box end structure.

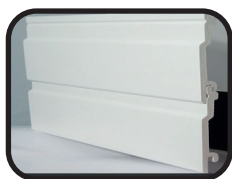
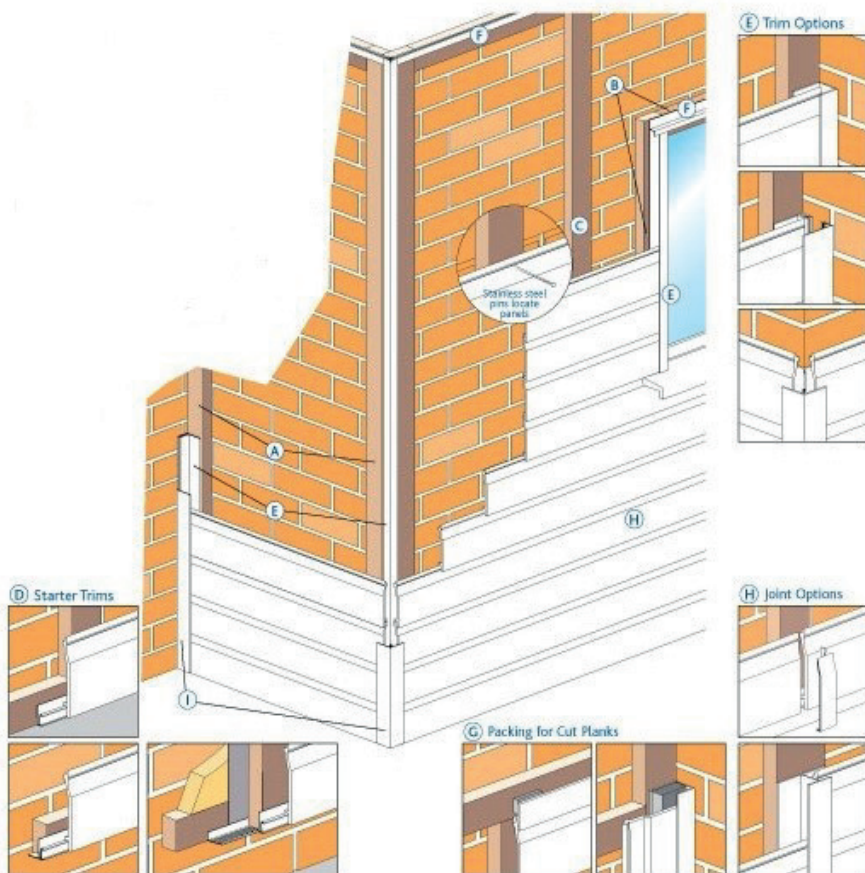
- B. Measure and cut box end from a deep board. Front edge should tilt up to match height of fascia board.
- C. Measure and cut fascia to form the return to gable wall.
- D. Remove section from corner joint to fit around rafter.
- E. Fix bargeboard directly to gable rafter.

Decorative Barge Boards and Finials Available See Page 27



# Cladding Installation

## INSTALLATION



V GROOVE CLADDING



CLADDING TRIMS



TEXTURED



020 8665 1221



[sales@carltonplastics.co.uk](mailto:sales@carltonplastics.co.uk)

## Sequence of Work

- A. Fix perimeter frame battens (recommended 25 x 38mm)
- B. Fix battens around openings.
- C. Fix intermediate vertical battens.
- D. Starter trims ( or bottom angle ventilation strip, as appropriate)
- E. Vertical perimeter trims (where 2-part trims are used fix only inner part)
- F. Top perimeter trims (engage inside vertical trims)
- G. Packing to battens as required for any cut planks.
- H. Plank profiles and joint covers or centre joint trims as appropriate.
- I. Outer component of 2-part trims.

To Calculate the number of lengths required  
divide the square meterage by

0.5 (100mm Cladding)

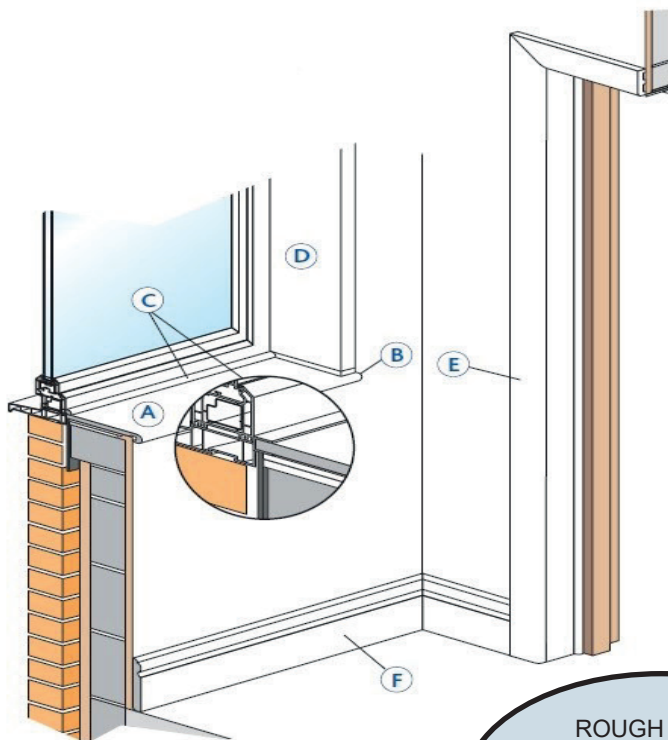
0.75 (150mm Cladding)

This will give an exact number of lengths - not allowing for wastage

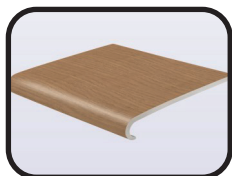


# Window Board & Trims Installation

## INSTALLATION



ROUGH GUIDE  
1 GLUE & ACTIVATOR  
= 20m of Trim



HOCKEY WINDOW BOARD



TRIMS



GLUE & ACTIVATOR



020 8665 1221



[sales@carltonplastics.co.uk](mailto:sales@carltonplastics.co.uk)

## General

Fix to dry sound timber or masonry with a general purpose adhesive, where necessary, using stainless steel plastic headed screws or nails.

Do not fix to damp surfaces. If there is a risk of damp after fixing, use a low modulus silicone.

Rotten or damaged timber should be replaced before over capping. On irregular surfaces use packing pieces where needed.

- A. Window Board: choice of
  - 18mm Bullnose
  - 9mm Bullnose
  - 9mm Reveal Liner/ Cover board
- B. End Cap: cut to suit
- C. Choice of trims
- D. 9mm reveal Liner (Flat or Cover board)
- E. Architrave Trims
- F. Skirting Profiles



TRIMS



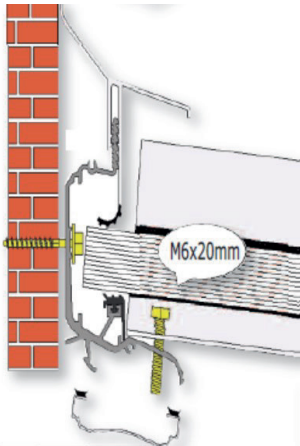
LAMINATED WINDOW BOARD



ARCHITRAVE

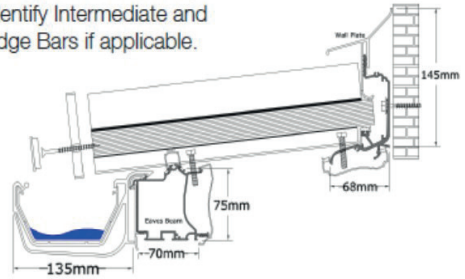
# Self-supporting roof bar Installation

Wallplate

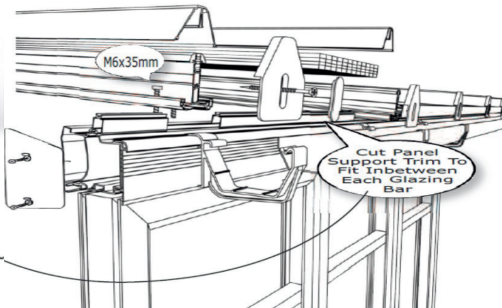
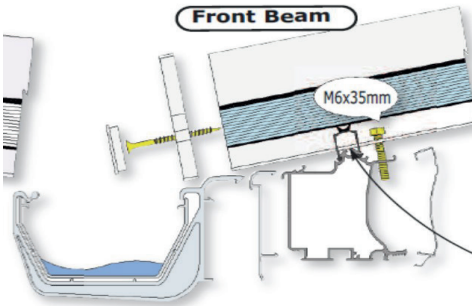


Roof Bars

Fix Self Support Bars to Wallplate and Eavesbeam at correct centres using Self-Drill Screws. Identify Intermediate and Edge Bars if applicable.



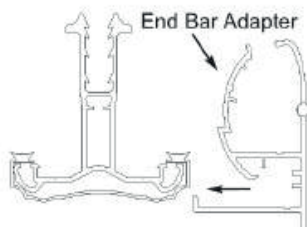
Front Beam



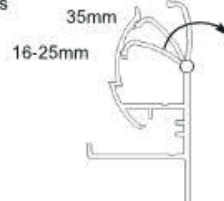
Lay taped poly sheets into the bars and put edge bar adaptors in place. Gently tap wallplate top caps down onto poly sheets. Gently tap bar top cap down onto sections to correct positions.

Top caps should project 5mm from end of the beam sections at gutter position. Attach sheet closures to the end of polycarbonate sheet.

Fix end caps to bars using screws provided. Fix end caps to the eavesbeam and wallplate.



Adjust To Suit Required Glazing Thickness



INSTALLATION



020 8665 1221



[sales@carltonplastics.co.uk](mailto:sales@carltonplastics.co.uk)

## Timber supported Glazing bars

1. Read these instructions thoroughly before cutting any parts.
2. We recommend a minimum pitch of 10 degrees (ie a fall of 175mm in every 1m). Pitches of less than this should be avoided where possible as water run off may be reduced.
3. The aluminium base needs to be cut 5mm longer than the polycarbonate sheet. This will allow the end cover to be fitted flush with the PVCu cap whilst providing a gap for drainage.
4. Fixing holes are to suit a no. 6 wood screw. These are to be drilled in the centre of each glazing bar between the upright toothed legs. The holes should be around 75mm in from each end and at no greater than 450mm intervals along the bar.
5. Fix aluminium base to rafter using no. 6 roundhead wood screws. Ensure bars are parallel to each other and square to frame, or the polycarbonate sheets may not fit.
6. The base gaskets (joined in centre) need to be pulled apart to provide 2 lengths. Slide these gaskets into slots in base.
7. Measure and cut polycarbonate sheet to length allowing an extension of approximately 50mm to overhang the gutter. When calculating the width of the sheet allow 3mm either side for thermal expansion.
8. Apply silver tape, from the tape pack, to the top of the sheet to prevent ingress of dust and dirt and the breather tape to the bottom of the sheet. Lift protective film for approximately 50mm down each side. Place sheet in position on the glazing bar base.
9. Position the PVCu cap so that the toothed legs locate inside the central recess in the aluminium base. Press the cap down and firmly tap into position until teeth are engaged in the locking points appropriate to the thickness of the sheet being fitted. Please note that when using 25mm polycarbonate sheet the teeth will only engage 1 notch down. The teeth will engage further down when using 10mm or 16mm polycarbonate sheet. Ensure the outline of the capping is consistent and the sheet is firmly held in place.
10. If a universal edge trim is to be used at the open edges. locate this in the groove on one side of the aluminium base before pushing capping down.
11. When all sheets are in position remove the protective films and fit the end covers by pushing the legs into the slots provided in the aluminium base.
12. PVCu sheet closure (available separately) can then be cut to length. Tap on the ends of the sheeting and butt up against the glazing bar covers.
13. Fixing buttons should be used in exposed conditions or where large panels are used. Always fix a minimum of 1 button through the sheet onto the front eaves beam to help prevent the polycarbonate from slipping forward. Ensure the diameter of hole cut is large enough to allow the polycarbonate sheet to expand without coming into contact with the screw.

# Composite fence installation

Installation of a composite fencing product is easy and straightforward. All our products are compatible with recognised building and fencing materials. Composite fencing can be sawn and fixed using traditional cutting tools. This easy-to-understand guide provides a detailed summary of installation.

## 1. PLANNING YOUR PROJECT

All fence panels are made to a standard 6ft (1.828m) width, and are usually available in four heights - 3ft (900mm), 4ft (1.2m), 5ft (1.52m) and 6ft (1.8m). If gravel boards are to be utilised, you should make an allowance of 1ft (300mm) when choosing panel heights. Posts will be 2ft (600mm) longer than the actual fence height (including the gravel board if actually used). Composite fencing posts should be concreted into the ground to ensure that the fence is sturdy. Allow 2ft (600mm) above the chosen fence height when deciding on post height. This extra 2ft (600mm) will be set below ground level in the concrete. Longer posts will be needed for sloping or soft ground.

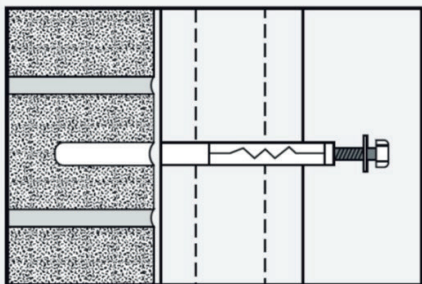
## 2. MARKING OUT THE RUN

Establish the line of the fence by stretching a strong cord between stakes at the extremities of the run. Note that the posts should always be on your side of the boundary. Be sure to clear away any plants and vegetation along the line of the fence.

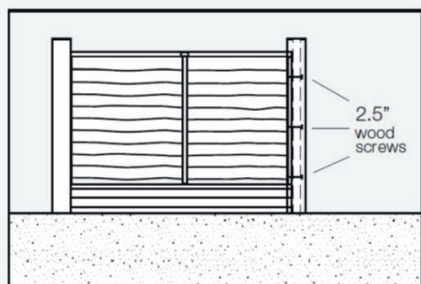


## 3. MOUNTING THE FIRST POST

The first post will be the datum point for the complete run and therefore must be set accurately and upright. If the fence is running up to the house make sure the first post is securely attached to the building with wall anchors i.e. drilled and plugged. Be sure to insert these directly into the brickwork and not into the mortar.

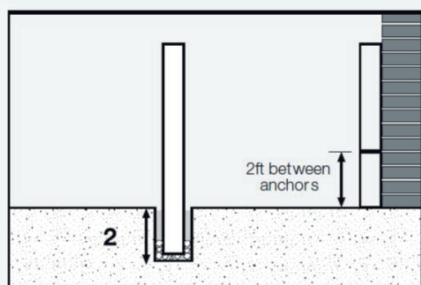


Anchors should be spaced no more than 2ft (0.6m) apart with no less than two in total. Drill the holes in the post first and allow only a small clearance over the shank diameter of the anchor bolt. Offer the post to the wall ensuring it is level in both vertical planes and aligned correctly (using a spirit level and engineers square). If necessary use packing between the post and the wall. Bolt the post firmly into position. If the first post is in open ground it will again need to be upright and perpendicular to the ground in both vertical planes and facing accurately in the correct direction. Mount in concrete as detailed below then attach to the first fence panel using 2.5" wood screws.



## 4. FIXING YOUR POSTS IN CONCRETE

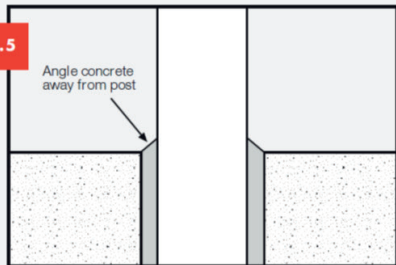
Following the line you have marked, using either a post borer or spade, dig holes to accommodate the posts at a minimum depth of 26" (650mm). Pack the base of the hole with approximately 50mm of broken brick or stone hardcore to provide initial support for your post.



Utilising wooden braces for support as well as a spirit level, and square for positioning, pack with more hardcore around the bottom of the post leaving approximately 1ft (300mm) for further packing and concrete. When you are satisfied the post is level fill the hole with concrete. You should allow a full 24 hours for the concrete to go off and set before removing the support braces. A good tip would be to use quick drying concrete, which should save time and allow the fence to become permanent within a shorter space of time.



fig.5



When finishing the concrete around the base of the post, angle the concrete away from the post to allow rainwater to drain away easily.

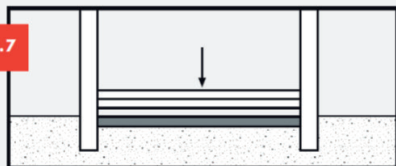
## 5. SECURING THE GRAVELBOARD AND FENCE PANEL

fig.6



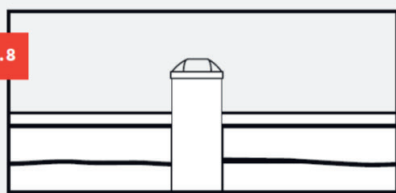
Place the gravel board into the 'H' slot of the post and align. The gravelboard may be sunk into the ground to provide a more secure fitting. Position your next post in place allowing a 2.5mm expansion gap at both ends of the gravelboard (use spacers).

fig.7



Secure the post as above, and finally, slot the fence panel between the two posts. If required, cut the posts down to size using standard cutting tools and complete by fitting decorative caps to posts.

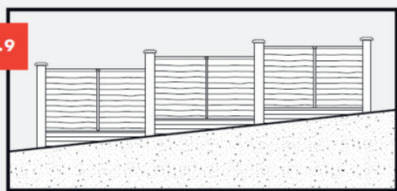
fig.8



## 6. CREATING A FENCE ON SLOPE

Essentially the methods above can be used to create a sloping fence. Cut your PVC gravel board to shape using standard cutting tools to provide a terrace effect. Longer fence posts may be required to compensate for the stepped panels (please refer to your local supplier). Where possible, attempt to spread the change as evenly as possible over the fence run to provide a more aesthetically pleasing finish.

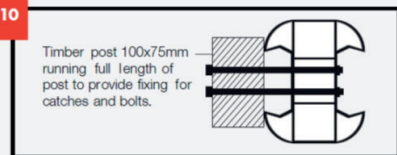
fig.9



## 7. HANGING A GATE

In order to hang a gate a timber post can be fixed to the composite fencing post as shown in fig (10) below. This will allow a fixing point for the hinges and catches. We would also recommend that when composite fencing posts are used as gate posts that a high flow rapid strength grout (not concrete) is poured down them to the top of the posts to reduce flex as much as possible during the gates normal operation of opening and closing.

fig.10



## NOTE

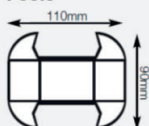
Each job is different and for fences over 6' tall, a high flow rapid strength grout (not concrete) should be poured down the posts to reduce the appearance of flex. This step can be done to any fence at any time if the flex is more than you wish.

Once erected composite fencing DOES NOT require maintenance for protection against rot and decay, it can't rot that's the beauty of composite fencing, it will weather naturally just like any other outdoor product.

Please note as we are replicating the characteristics of timber, products will vary in shade and grain effect. Some boards will have less grain and others will have grain effect, some products may also show the inner core material. All these effects are normal and part of the manufacturing process and in no way affect the longevity of composite fencing. Composite fencing will fade naturally, as does timber, and this in no way will affect the longevity of the product.

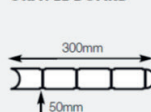
## TECHNICAL DETAILS

### POSTS

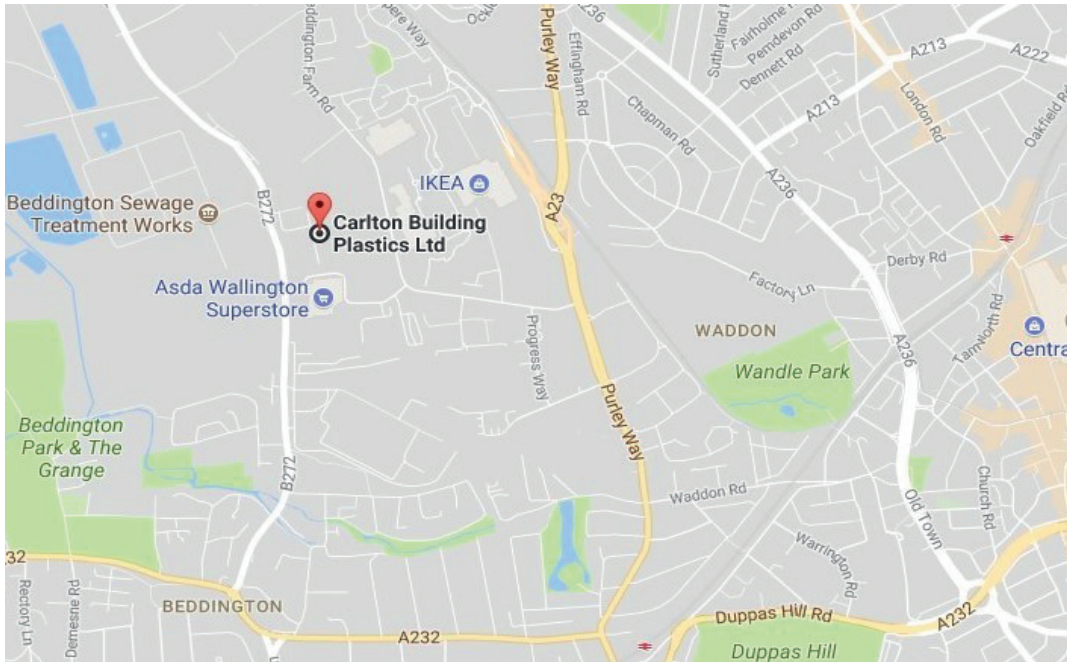


9' Post 110 x 90 x 2743mm  
8' Post 110 x 90 x 2438mm  
6' Post 110 x 90 x 1829mm

### GRAVEL BOARD



6' Gravel Board 300 x 50 x 1829mm



020 8665 1221



sales@carltonplastics.co.uk

# The Perfect Package



**Fascias, Soffits, Cladding, Guttering**

**Perfect for the Roofline Installer!**



**Windows, Doors, Trims & Fixings**

**Perfect for the Window Installer!**



**Conservatory Roofs, Polycarbonate, Glass**

**Perfect for the Conservatory Installer!**

Trade Counter Opening Hours

**Monday 7.30am to 4.30pm**

**Tuesday 7.30am to 4.30pm**

**Wednesday 7.30am to 4.30pm**

**Thursday 7.30am to 4.30pm**

**Friday 7.30am to 4.30pm**

**6 Beddington Trading Park, Bath House Road, Croydon, CR0 4TT**

**020 8665 1221**

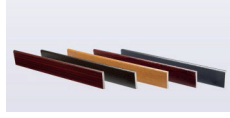
**Fax: 020 8665 1444**



Perfect for the Roofline Installer! Perfect for the Window Installer! Perfect for the Conservatory Installer!



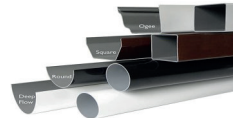
Roofline



Trims



Windowline



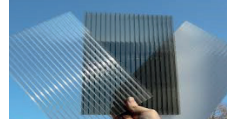
Guttering



Composite Decking



Windows & Doors



Polycarbonate Sheet



Cladding



Sky Lanterns



Bi-Fold Doors



Cornice, & gallows



Ancillaries



Roof Systems



Fencing



Mouldings



Gloss Foam Sheets



Bathroom Cladding



Composite Doors



Door Canopies

6 Beddington Trading Park, Bath House Road, Croydon, CR0 4TT

**020 8665 1221**

Fax: 020 8665 1444